

# DRAKE

## **DRAKE SIMMENTAL** *Bull and Female Sale*

### **1.31.25**

Drake Sale Facility, Centerville, IA at 1:00 PM (CT)

*72 Simmental, SimAngus™ Age-Advantaged and Yearling Bulls  
29 Spring Calving SimAngus™ Bred Heifers*

# Welcome to the Sale.

Conventional wisdom tells us to never ask, or reveal, a woman's age. Therefore, we will just say that dad turned 86 in November, and mom is not as old as dad. They continue to work every day and frankly, we don't really notice or think about large differences in their lives. Last year mom and dad sold a bull for over \$30,000 for the first time, raised 300 bushel an acre corn for the first time (pretty impressive on the hills of southern Iowa) and raised 76 bushel per acre beans for the first time. Their activity, mental acuity and accomplishments in the past year are all a testament to the idea that clean living (relatively speaking!) and remaining active are the best deterrent to doctors and waiting rooms. It is also a reminder that tenacity and grit are the best paths to remarkable achievement. What's that saying? "You can't beat a person that won't stop."

That kind of thinking came to mind as I reflected on the fact that 2025 represents our family's 125th year on the home farm and 171 years in southern Iowa. We are honored to welcome folks from around the country to our farm, in person or electronically, to celebrate this special 125th anniversary. We know that you have more choices than ever for your genetic provider, and we pledge to continue to use every available tool, and outstanding customer service, to earn and keep your business. We appreciate your interest in our program more than we can express. We also understand that in order to keep your business, we have to continue to provide cutting edge genetics in an efficient, sound and profitable package. And we understand it is fair for you to ask: "What have you done for us lately?" . We have continued to develop and acquire breed leading genetics in both the Simmental and Angus breeds. This sale presents our customers the opportunity to acquire sons of Deadwood, Five Star Jackson, Eagle, Essential, Genesis, Connealy Clarity and DB Iconic. You will note that these bulls all have one thing in common-broad based genetic excellence. Focusing on one trait is the fast track to oblivion and we continue to search widely for bulls and females that do it all-calve easily, grow quickly and efficiently WITHOUT CREEP FEED, on moderate but adequate frame, high marbling, large rib eye cattle with strong maternal traits-all in a sound structure with excellent docility. It can be done, but it takes dedication and tenacity. That is our job for you-to take the time and resources required to produce outstanding broad based excellence – on both the sire and dam side- to produce predictable excellence. And we won't stop.

Please join us to celebrate 125 years on the home farm and pick your next herd bull from the 73 prospects available, and grow your herd by picking from 28 outstanding bred heifers, all bred to calve early to breed leading sires. We look forward to talking with you about any of the lots offered or our philosophy- please contact us at the contact information below. We look forward to seeing you on January 31, 2025!

## The Drake Simmental Crew

*"I know of no pursuit in which more zeal and important service can be rendered to any Country than by improving its agriculture-its breed of useful animals-and other branches of a husbandman's cares..."* - George Washington



Drake  
Simmental

# DRAKE SIMMENTAL

## Bull and Female Sale

# 1.31.25

Drake Sale Facility, Centerville, IA at 1:00 PM (CT)

### SALE LOCATION

24366 570th Street  
Centerville, IA 52544

### SALE DAY CONTACTS

Mason Harlan	641.895.5735
Flint Drake	563.580.1053
Denny Drake	641.658.2288
Larry Drake	641.895.9422
Marty Ropp	406.581.7835
Corey Wilkins	256.590.2487

### AUCTIONEER

Tracey Herl 402.469.3852

### MARKETING REPRESENTATIVES

Austin Brandt	712.621.4829
<i>Midwest Marketer</i>	
Mike Sorenson	641.745.7949
<i>American Cattleman</i>	
Jeremie Ruble	406.581.7940
Marshall Ruble	515.231.3198
Greg Miller	608.778.8785

### SCHEDULE OF EVENTS

#### Thursday, January 30

All Day Cattle available for viewing and pasture tours

#### Friday, January 31

8:00 AM	Cattle available for viewing
11:30 AM	Lunch
1:00 PM	Sale Begins

**DVAuction**  
Broadcasting Real-Time Auctions

### VIDEO AUCTION

Video Sale format. Cattle will be displayed outside the sale facility for live viewing. Sale broadcast on DVAuction.com. See page 20 for more information.

### VIDEOS

Videos provided by Bradley J Hook.

### TERMS AND CONDITIONS

Cash, personal or company check accepted unless prior arrangements have been made. All purchases are to be settled at the conclusion of the sale.

### EPDS

All EPDs are the most current BOLT at the time of printing by IGS and the American Simmental Association.

### SEMEN AND INTEREST

We will retain 1/2 semen interest on bulls selling under \$20,000 bid and 1/3 semen interest on bulls with a \$20,000 bid or higher.

### DELIVERY AND BOARD

- Free delivery to farm or central points within 100-mile radius of the farm
- Free delivery for of gross purchases over \$30,000 to central points in the US
- \$200 per head delivery to central points in states bordering Iowa
- Bulls will be cared for free of charge until April 1st
- \$200 off bulls if they are picked up within one week from the sale

### SALE VET

Animal Health Center, Dr. Dewey Nibe

### TRUCKING

Please see page 36 for more information.



Iron Creek Cattle Co.



Harlan Cattle Co.



Drake Simmental



Drake Cattle Company

### DRAKE SIMMENTAL

Larry and Carol Drake

Mason 641.895.5735

Larry 641.895.9422

### IRON CREEK CATTLE CO.

Flint 563.580.1053

### DRAKE CATTLE COMPANY

Denny and Cara Drake

Denny 641.658.2288

### HARLAN CATTLE CO.

Mason and Sara Harlan

Mason 641.895.5735

**ALLIED**  
GENETIC RESOURCES

Marty Ropp 406-581-7835

Corey Wilkins 256-590-2487

Jared Murnin 406-321-1542

[www.alliedgeneticresources.com](http://www.alliedgeneticresources.com)

# Improved Buying Confidence with Greater Genomic **ASSURANCE**

Access to more and better information has always been key to making wise decisions. The evolution and improvement of genetic evaluation tools too has given us an ever-clearer picture of the true genetic makeup of cattle and thus a better view of the value proposition. RightMate, powered by Top Genomics LLC is taking the evaluation of genetics and genomics one giant step further. By combining specific genomic information with the long-proven value of EPDs, this new advancement in technology improves our depth and precision when evaluating the actual ability to transmit value and profit.

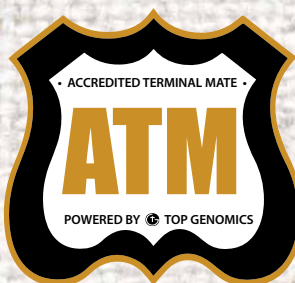
The 3 Accreditation Logos below are designed to simplify bull selection and improve buyer confidence by more accurately describing the genetics offered and by reducing risk. What this means to you as a customer is a much greater assurance that you are getting both what you want and need from the genetics you purchase. What it means to your seedstock provider is access to RightMate technology that simply sets them apart from the rest of the industry.



**ACCREDITED GENOMIC PLUS** – For the majority of producers who simply need consistent and balanced genetic improvement, without genomic setbacks, G+ Accredited bulls should be on your list for premium purchase. These sires will absolutely move you forward for both cost reduction and income producing traits and substantially reduce risk when compared to all other evaluation programs. It's simple, the right genes are in these bulls to help secure a profitable future and they have great EPDs to match!



**ACCREDITED CALVING EASE** – Simply find bulls with the ACE logo for third party Accredited, secure Calving Ease bulls. Though we have had tools in the past to assist in choosing heifer bulls, we've never had one nearly this effective. The reduced risk that comes with this genomic certification will simply make your decisions easier and your heifer calving season more successful. Purchase special purpose ACE bulls with confidence. They will deliver consistent and predictable calving ease.



**ACCREDITED TERMINAL MATE** – Just like an ATM machine makes it simpler to access your cash, the ATM Logo highlights bulls accredited to generate extra cash income as soon as your next calf crop! These bulls are meant specifically to use only on mature cows and for the purpose of adding performance, pay weight and end product value to market.

# A Note from the Sale Manager

Welcome to the 2025 Drake Simmental Bull and Female Sale. What a wonderful set of genetics the Drake and Harlan families have for your appraisal on 1/31 in Centerville, IA.



The commitment to genetic advancement in supplying the very best profit-oriented bulls to the commercial beef business can be found from cover to cover in this outstanding offering. Great bulls come from great cows and that is exactly what you will find in volume when going through the Drake, Iron Creek and Harlan herds. The operations have accelerated genetic advancement with their robust embryo transfer herd and numerous bulls in the sale represent some of the very best genetics on their bottom side. The pursuit of genetic advancement along with a sharp eye for phenotype and quality will make this an exciting set of bulls to sort through on 1/31. If you have not made the trip to Centerville to check out the offering, we highly encourage you to do so.

Optimism for our country and the beef business continues to build as we turn the calendar into 2025. All classes of cattle are trading at strong price points and the cow calf producer is looking at a highly profitable year in 2025. Premiums have never been higher for quality genetics and management. If producers are searching for more genetic horsepower the Drake bulls will no doubt move your operation ahead in a positive manner.

We hope you will take the time and join us January 31st in Lost Centerville. As always if we can be any assistance, please do not hesitate in reaching out.

Sincerely,  
*Marty Ropp, Corey Wilkins and Jared Murnin*

---

## Drake and Iron Creek Bull Guarantee

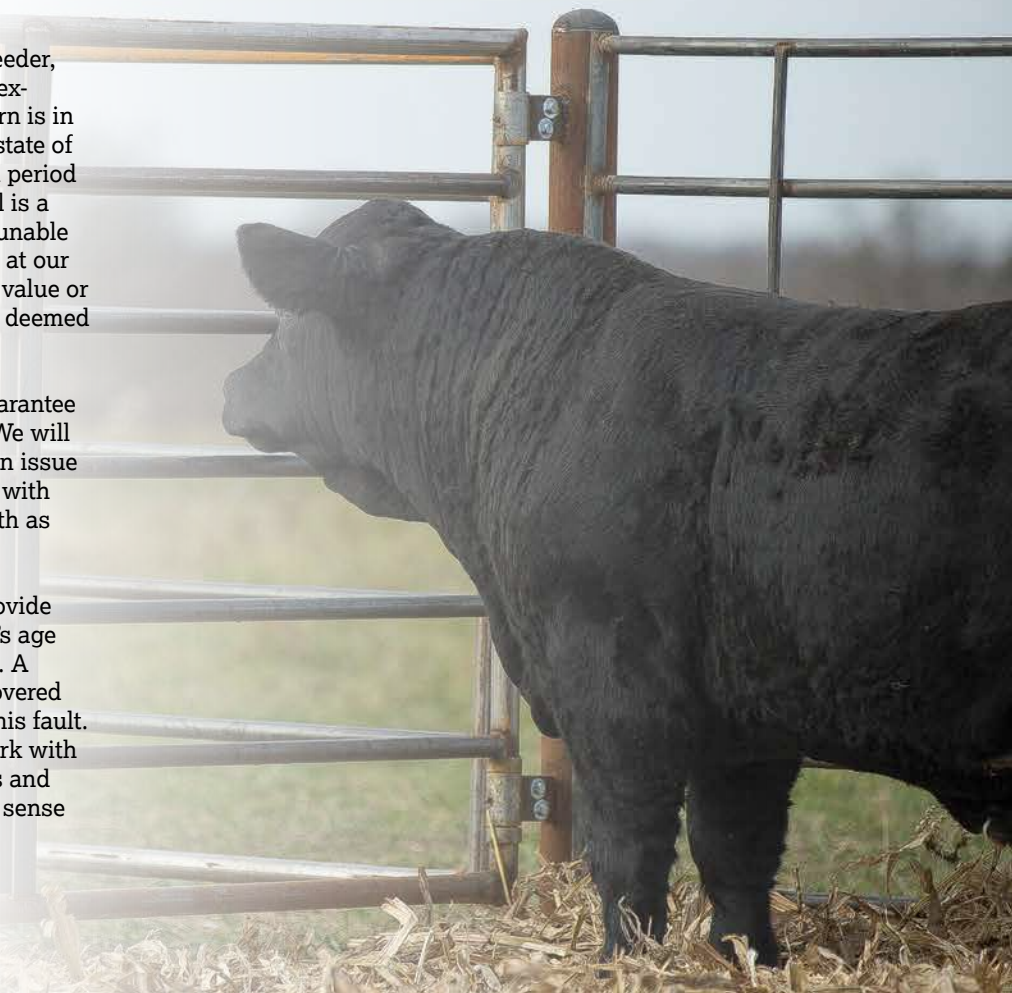
We guarantee every bull purchased in this sale to be a breeder (defined as the ability to settle healthy cows by the time the bull is 18 months of age) with the exception of:

- Bull calves sold at side of dam;
- Injury or disease occurring to the animal after time of sale;
- Negligence or willful misconduct on the part of the purchaser; or
- Bulls shown competitively after sale.

In the event an animal is claimed to be a non-breeder, the animal may be returned to us, at the buyer's expense, if in good physical condition and the return is in compliance with the health requirements of the state of Iowa. We shall be entitled to a six (6) month trial period following the return in which to prove the animal is a breeder. If at the end of such six months we are unable to establish that the animal is a breeder, we will, at our option, replace the animal with another of equal value or refund the purchase price. Either option shall be deemed full satisfaction and settlement.

All of the legal jargon aside, we view the bull guarantee as a good faith neighbor's agreement with you. We will act in good faith to determine if there was or is an issue with the bull and if there is we will make it right with you. In exchange we ask that you act in good faith as well.

Please manage the bulls with common sense-provide sufficient feed and shelter, keep in mind the bull's age when turning him out and monitor his condition. A young bull turned out with 50 cows in a snow covered pasture eventually won't breed cows-but it isn't his fault. We appreciate your business and will always work with you to do what is right. Please also work with us and most importantly care for the bulls in a common sense way. Thank you.





IRON CREEK BUILT DIFFERENT 34M Sells as Lot 1.

**LOT 1** **IRON CREEK BUILT DIFFERENT 34M** ♂GGP  
 Homo Black II Homo Polled 3/8 SM 5/8 AN  
 1/21/2024 34M ASA# 4378399

POSS MAVERICK		CLRS GUARDIAN 317G							
<b>POSS DEADWOOD</b>		<b>CCR MS 6175 GUARD 1003J</b>							
POSS ELLUNAMERE 399		CCR MS 2407 WD RNG 6175D							
	CE	BW	WW	YW	ADG	MCE	MILK	MWW	STAY
EPD	17.3	-3.2	97.4	153.8	0.35	10.8	24.4	73.2	18.2
Rank	10	10	3	3	10	10	50	10	15
	DOC	CW	YG	MARB	BF	REA	API	TI	
EPD	14.2	58.9	0.09	0.97	0.034	0.64	188.2	109.9	
Rank	30	4	99	2	99	60	1	1	
BW					ADJ. WW				
<b>84</b>									

This outstanding bull represents the near culmination of our goal as a breeder in that he combines the phenotype the industry loves with broad genetic excellence- he truly is "built different". Sired by the incomparable Deadwood (who sired two \$30,000+ bulls in our 2024 sale) and out of what we consider close to the perfect cow. We purchased her from Cow Camp Ranch for \$10,000 and she has been worth every penny- massive year around, moderate framed and an excellent mother. 34M carries the best of both parents under his hide with breed leading calving ease, growth, maternal and carcass traits-resulting in a top 1% API of 188 and a top 1% TI of 110. WE ARE RETAINING FALL BREEDING RIGHTS ON BUILT DIFFERENT. The parties will share equally in any cost of transport.



CCR MS 6175 GUARD 1003J Dam of Lot 1.



IRON CREEK ALCATRAZ 013M Sells as Lot 2.

**LOT 2** **IRON CREEK ALCATRAZ 013M** **GGP**  
 Homo Black II Homo Polled 1/2 SM 1/2 AN  
 1/21/2024 013M ASA# 4378378

POSS MAVERICK HOOK'S BEACON 56B  
**POSS DEADWOOD** KBHR MATRON OF HONOR F202  
 POSS ELLUNAMERE 399 BAR CK MS X38 106Z

	CE	BW	WW	YW	ADG	MCE	MILK	MWW	STAY
EPD	12.8	-0.7	92.7	155.7	0.39	8.7	28.8	75.2	14.9
Rank	50	35	10	3	2	25	15	5	50
	DOC	CW	YG	MARB	BF	REA	API	TI	
EPD	13.1	67.5	-0.09	1.25	-0.022	0.87	191.7	114.3	
Rank	40	1	85	1	70	20	1	1	
	BW		ADJ. WW						
	79								

We love the combination of balance and power in Alcatraz. Reasonable calving ease with top 2% gain, 5% maternal weaning weight, 1% carcass weight, marbling and a 190 (top 1%) All Purpose Index and a whopping 114 (top 1%) Terminal Index. Gained 4.6 pounds per day to post a 1459 pound yearling weight.



POSS DEADWOOD Sire of Lot 2.



KBHR MATRON OF HONOR F202 Dam of Lot 2.

Year after year the Matron cow produces outstanding bulls and females-regardless of the sire. Last year her Deadwood sons included the \$30,000 Iron Creek Overhaul purchased by great seedstock producers- the Beggars in Montana, and her three Deadwood sons averaged about \$17,000. This year she provides three full brothers to those outstanding bulls and each is a seedstock quality bull for the most discriminating cattleman or cattlegoman.

Folsom brings his own top 2% average daily gain, top 4% maternal calving ease, and 1% marbling - with top 10% calving ease! A 191 API and 111 TI round out as impressive a set of numbers as you will see in a bull-all in that now expected attractive Matron x Deadwood phenotype. Posted weaning weight of 782 and gained 4.6 pounds per day for a 1518 pound yearling weight.



IRON CREEK FOLSOM 049M Sells as Lot 3.

3	<b>IRON CREEK FOLSOM 049M</b>		<b>GGP</b>						
	Homo Black    Homo Polled		1/2 SM 1/2 AN						
	1/13/2024	049M	ASA# 4378379						
POSS MAVERICK		HOOK'S BEACON 56B							
<b>POSS DEADWOOD</b>		<b>KBHR MATRON OF HONOR F202</b>							
POSS ELLUNAMERE 399		BAR CK MS X38 106Z							
EPD	CE	BW	WW	YW	ADG	MCE	MILK	MWW	STAY
Rank	16.9	-2.9	87.3	149.5	0.39	11.2	28.8	72.5	14.3
	10	10	15	5	2	4	15	10	55
EPD	DOC	CW	YG	MARB	BF	REA	API	TI	
Rank	14.5	58.6	0.02	1.13	0.020	0.73	191.0	110.9	
	25	4	99	1	99	45	1	1	
	BW		ADJ. WW						
	<b>84</b>								



4	<b>IRON CREEK SWAGGER 16L</b>		<b>GGP</b>						
	Homo Black    Homo Polled		1/2 SM 1/2 AN						
	10/2/2023	16L	ASA# 4358587						
POSS MAVERICK		HOOK'S BEACON 56B							
<b>POSS DEADWOOD</b>		<b>KBHR MATRON OF HONOR F202</b>							
POSS ELLUNAMERE 399		BAR CK MS X38 106Z							
EPD	CE	BW	WW	YW	ADG	MCE	MILK	MWW	STAY
Rank	13.2	-0.1	87.0	143.4	0.35	9.0	28.8	72.3	14.5
	45	50	15	10	10	20	15	10	55
EPD	DOC	CW	YG	MARB	BF	REA	API	TI	
Rank	15.7	70.7	-0.13	1.11	-0.011	1.09	179.8	106.5	
	15	1	80	1	85	4	3	1	
	BW		ADJ. WW						



IRON CREEK SWAGGER 16L Sells as Lot 4.

Swagger is an imposing and powerful fall bull with top 10% growth traits, 1% marbling, 4% ribeye area, outstanding Indexes and reasonable calving ease. He is the kind of bull we are proud to offer and would love to have walk our own pastures.





IRON CREEK CHARISMA 31L Sells as Lot 5.

5	IRON CREEK CHARISMA 31L		XGGP							
	Homo Black II Homo Polled		1/2 SM 1/2 AN							
	8/17/2023	31L	ASA# 4341420							
POSS MAVERICK		HOOK'S BEACON 56B								
POSS RAWHIDE		KBHR MATRON OF HONOR F202								
POSS BLUEBLOOD 6502		BAR CK MS X38 106Z								
	CE	BW	WW	YW	ADG	MCE	MILK	MWW	STAY	
EPD	16.4	-2.5	84.8	134.4	0.31	11.4	27.3	69.7	15.8	
Rank	15	15	20	20	25	4	25	20	40	
	DOC	CW	YG	MARB	BF	REA	API	TI		
EPD	13.3	61.8	-0.13	0.92	-0.008	1.00	178.5	103.2		
Rank	40	3	80	3	90	10	3	2		
	BW					ADJ. WW				

Charisma displays the balance excellence that is our bull breeding goal- no extremes and excellence in all key traits. He combines top 15% calving ease with top 20-25% growth, great maternal and carcass traits and top Index scores. Sure fire breeding bull.



When we saw the depth of body and growth on a moderate frame in our Angus Poss Rawhide calves, we knew we had to cross him with Matron-and we are delighted with the result. These four bulls represent genetic and physical power-and are all seedstock quality.



IRON CREEK CHECKMATE 7344L Sells as Lot 6.

6	LOT	IRON CREEK CHECKMATE 7344L	XGGP
		Homo Black II Homo Polled	1/2 SM 1/2 AN
	8/30/2023	7344L	ASA# 4322391

POSS MAVERICK  
**POSS RAWHIDE**  
 POSS BLUEBLOOD 6502

HOOK'S BEACON 56B  
**KBHR MATRON OF HONOR F202**  
 BAR CK MS X38 106Z

	CE	BW	WW	YW	ADG	MCE	MILK	MWW	STAY
EPD	16.1	-0.2	98.2	157.8	0.37	11.0	27.3	76.4	13.4
Rank	15	45	2	2	4	5	25	4	65
	DOC	CW	YG	MARB	BF	REA	API	TI	
EPD	13.7	71.1	-0.04	0.78	0.007	0.96	166.8	104.8	
Rank	35	1	95	10	95	15	10	1	
	BW				ADJ. WW				

It isn't easy to find a bull in the top 15% for calving ease that is also top 3% weaning and yearling weight, top 4% gain, 4% maternal calving ease and maternal weaning weight, top 1% carcass weight and 10% marbling and ribeye area. Whether you plan to sell at weaning, feed them out, keep heifers or fire up the grill – Checkmate has you covered.



KBHR MATRON OF HONOR F202 Dam of Lot 6.



POSS RAWHIDE Sire of Lot 6.

Ascend is that bull that you just enjoy looking at in the pen-and even more when you look at his genomically enhanced numbers.

Elite balance- top 25% calving ease, 15% weaning and yearling weight, 10-25% on maternal traits, 1-10% on carcass weight, marbling and ribeye area. A beef bull in all respects.



IRON CREEK ASCEND 297L Sells as Lot 7.

<b>LOT</b> <b>7</b>	<b>IRON CREEK ASCEND 297L</b>								<b>GGP</b>
	Homo Black    Homo Polled				1/2 SM 1/2 AN				
	8/22/2023				297L				ASA# 4341427
POSS MAVERICK				HOOK'S BEACON 56B					
<b>POSS RAWHIDE</b>				<b>KBHR MATRON OF HONOR F202</b>					
POSS BLUEBLOOD 6502				BAR CK MS X38 106Z					
	CE	BW	WW	YW	ADG	MCE	MILK	MWW	STAY
EPD	<b>14.7</b>	<b>-1.9</b>	<b>89.3</b>	<b>140.7</b>	<b>0.32</b>	<b>10.2</b>	<b>27.3</b>	<b>72.0</b>	<b>12.4</b>
Rank	30	20	15	15	20	10	25	15	75
	DOC	CW	YG	MARB	BF	REA	API	TI	
EPD	<b>13.2</b>	<b>73.8</b>	<b>-0.07</b>	<b>0.74</b>	<b>0.008</b>	<b>1.12</b>	<b>159.9</b>	<b>100.3</b>	
Rank	40	1	90	10	95	3	15	3	
	BW				ADJ. WW				

<b>LOT</b> <b>8</b>	<b>IRON CREEK RIZZ 139L</b>								<b>GGP</b>
	Homo Black    Homo Polled				1/2 SM 1/2 AN				
	8/27/2023				139L				ASA# 4341443
POSS MAVERICK				HOOK'S BEACON 56B					
<b>POSS RAWHIDE</b>				<b>KBHR MATRON OF HONOR F202</b>					
POSS BLUEBLOOD 6502				BAR CK MS X38 106Z					
	CE	BW	WW	YW	ADG	MCE	MILK	MWW	STAY
EPD	<b>16.5</b>	<b>-1.3</b>	<b>84.5</b>	<b>136.2</b>	<b>0.32</b>	<b>11.4</b>	<b>27.3</b>	<b>69.6</b>	<b>18.6</b>
Rank	15	30	25	20	20	4	25	20	15
	DOC	CW	YG	MARB	BF	REA	API	TI	
EPD	<b>12.3</b>	<b>67.2</b>	<b>0.09</b>	<b>0.89</b>	<b>0.034</b>	<b>0.73</b>	<b>179.4</b>	<b>99.9</b>	
Rank	55	1	99	3	99	45	3	3	
	BW				ADJ. WW				



IRON CREEK RIZZ 139L Sells as Lot 8.

Predictable broad based excellence-top 15% calving ease with top 20% growth, excellent maternal traits, top 2% carcass weight, 3% marbling and top 3% API and TI. Rizz can do anything you need a bull to do.



IRON CREEK HIGH NOON 24L Sells as Lot 9.



DB ICONIC G95 Sire of Lot 9.

9	<b>LOT</b>		<b>IRON CREEK HIGH NOON 24L</b>		<b>GGP</b>				
	Homo Black    Homo Polled		1/2 SM 1/2 AN						
10/26/2023		24L		ASA# 4341397					
MUSGRAVE 316 STUNNER			HOOK'S BEACON 56B						
<b>DB ICONIC G95</b>			<b>KBHR MATRON OF HONOR F202</b>						
DB MS DISCOVERY D13			BAR CK MS X38 106Z						
	CE	BW	WW	YW	ADG	MCE	MILK	MWW	STAY
EPD	<b>10.7</b>	<b>-1.4</b>	<b>88.5</b>	<b>141.2</b>	<b>0.33</b>	<b>5.2</b>	<b>27.8</b>	<b>72.4</b>	<b>14.0</b>
Rank	75	25	15	15	15	80	20	10	60
	DOC	CW	YG	MARB	BF	REA	API	TI	
EPD	<b>16.5</b>	<b>75.5</b>	<b>-0.05</b>	<b>1.11</b>	<b>-0.005</b>	<b>0.96</b>	<b>177.0</b>	<b>107.7</b>	
Rank	10	1	95	1	90	15	3	1	
BW					ADJ. WW				
<b>79</b>									

High Noon has been a favorite since he stood for the first time-of all the bulls he most resembles in physical appearance his \$30,000 maternal brother, Iron Creek Overhaul. A unique pedigree in the Simmental world, High Noon is sired by the Angus power bull DB Iconic. Top 15% across the board growth, top 10-20% maternal traits, top 1% carcass weight and marbling, a 177 (top 3%) All Purpose Index and a 108 (top 1%) Terminal Index. As further assurance of his genetic excellence, High Noon scores as both G+ and ATM in the RightMate analysis. A unique pedigree, phenotype and genetic makeup results in a can't miss breeding bull.





IRON CREEK HOLY SMOKES 010M Sells as Lot 10.

LOT <b>10</b>	<b>IRON CREEK HOLY SMOKES 010M</b>		<b>♂GGP</b>						
	Homo Black II Homo Polled		1/2 SM 1/2 AN						
1/16/2024		010M	ASA# 4378376						
CHERRY CREEK LAND GRANT		HOOK'S BEACON 56B							
<b>CONNELLY CLARITY</b>		<b>KBHR MATRON OF HONOR F202</b>							
BRESHIE OF CONANGA 6988		BAR CK MS X38 106Z							
EPD	CE	BW	WW	YW	ADG	MCE	MILK	MWW	STAY
Rank	14.2	-1.7	86.0	141.5	0.35	6.7	24.8	67.7	16.1
	35	25	20	15	10	55	45	25	35
EPD	DOC	CW	YG	MARB	BF	REA	API	TI	
Rank	13.7	59.0	-0.17	0.80	-0.016	1.05	169.7	100.0	
	35	4	70	10	85	10	10	3	
	BW		ADJ. WW						
	<b>54</b>								



KBHR MATRON OF HONOR F202 Dam of Lot 10.

Holy Smokes is an attractive and powerful January bull with top 10% average daily gain, 4% carcass weight, 10% marbling and API with a top 3% TI. Already a good looking guy, he should be a real looker by breeding time.



Connelly Clarity took the Angus world by storm with his astounding growth in a moderate frame and excellent feet and legs. He then died and his semen was in very short supply. We purchased 3 units at auction for \$2,000 a unit and used it exclusively in embryo transplant work. We couldn't resist breeding him to our Matron of Honor donor and are delighted with the results. In our experience the Clarity calves have a bit of a plain physical look until they hit about 18 months and they really bloom. His heifers we now have in production are, in our view, absolutely ideal cows-moderate of frame, massive bodied, nice shouldered and long fronts with great feet and udders. We truly believe these Clarity sons by Matron will be AI quality stud bulls-and their numbers agree.

A seedstock bull without question- TOP 1% WEANING WEIGHT, YEARLING WEIGHT, AVERAGE DAILY GAIN, CARCASS WEIGHT AND TERMINAL INDEX, with top 35% calving ease, 2% marbling, 5% ribeye area, and a top 3% API. This bull excels in every way possible-unique sire side pedigree for the Simmental breed, a powerful phenotype and breed leading numbers. Gained 5.25 pounds per day to post a 1498 yearling weight.



IRON CREEK CLEAR VISION D121M Sells as Lot 11.

**LOT 11** **IRON CREEK CLEAR VISION D121M** **♂GGP**  
 Homo Black || Homo Polled 1/2 SM 1/2 AN  
 1/25/2024 D121M ASA# 4378545

CHERRY CREEK LAND GRANT HOOK'S BEACON 56B  
**CONNELY CLARITY** **KBHR MATRON OF HONOR F202**  
 BRESHIE OF CONANGA 6988 BAR CK MS X38 106Z

	CE	BW	WW	YW	ADG	MCE	MILK	MWW	STAY
EPD	14.2	0.7	101.5	174.2	0.45	6.3	24.8	75.7	11.3
Rank	35	65	1	1	1	60	45	5	85
	DOC	CW	YG	MARB	BF	REA	API	TI	
EPD	13.7	77.5	-0.08	1.02	-0.004	1.08	175.6	112.3	
Rank	35	1	90	2	90	5	4	1	
	BW				ADJ. WW				



**LOT 12** **IRON CREEK CLARITY 033M** **♂GGP**  
 Homo Black || Homo Polled 1/2 SM 1/2 AN  
 1/27/2024 033M ASA# 4378547

CHERRY CREEK LAND GRANT HOOK'S BEACON 56B  
**CONNELY CLARITY** **KBHR MATRON OF HONOR F202**  
 BRESHIE OF CONANGA 6988 BAR CK MS X38 106Z

	CE	BW	WW	YW	ADG	MCE	MILK	MWW	STAY
EPD	15.8	0.8	93.9	155.8	0.39	7.6	24.8	71.9	16.9
Rank	20	65	5	3	2	40	45	15	30
	DOC	CW	YG	MARB	BF	REA	API	TI	
EPD	13.7	74.2	-0.14	0.99	-0.004	1.23	183.3	106.9	
Rank	35	1	75	2	90	1	2	1	
	BW				ADJ. WW				



IRON CREEK CLARITY 033M Sells as Lot 12.

It is so much fun to have bulls like these to offer. 033M personifies the broad based genetic excellence that has been our family's goal for 170 years- top 20% calving ease, top 3% growth, top 1% carcass weight, ribeye area and TI, top 2% marbling and API. Gained 4.75 pounds per day and posted a 1388 pound yearling weight.



KBHR MATRON OF HONOR F202 Dam of Lots 11 & 12.

Broad based genetic excellence- heifer safe calving ease, elite maternal and carcass traits and top 20-25% growth- you can have it all in this 182 API, 105 TI breeding bull.

These two Five Star Jackson sons of our Matron donor are exactly what we hoped for in this mating- excellent calving ease, maternal and carcass traits with strong growth, all in an attractive package.



IRON CREEK DEVIL YOU KNOW 013M Sells as Lot 13.

LOT **13** IRON CREEK DEVIL YOU KNOW 013M **GGP**  
 Hetero Black || Homo Polled PB SM  
 1/21/2024 013M ASA# 4378381

HOOK'S FULL FIGURES 11F HOOK'S BEACON 56B  
**FIVE STAR JACKSON J10** **KBHR MATRON OF HONOR F202**  
 KBHR F316 BAR CK MS X38 106Z

	CE	BW	WW	YW	ADG	MCE	MILK	MWW	STAY
EPD	16.3	-0.1	86.1	133.6	0.30	11.0	31.7	74.7	14.8
Rank	10	25	25	20	20	2	4	10	60

	DOC	CW	YG	MARB	BF	REA	API	TI
EPD	12.4	49.5	-0.23	0.89	-0.020	1.08	182.3	105.4
Rank	40	4	99	1	99	15	2	1

BW 74 ADJ. WW



LOT **14** IRON CREEK JACKED UP 1263M **GGP**  
 Homo Black || Homo Polled PB SM  
 1/16/2024 1263M ASA# 4378369

HOOK'S FULL FIGURES 11F HOOK'S BEACON 56B  
**FIVE STAR JACKSON J10** **KBHR MATRON OF HONOR F202**  
 KBHR F316 BAR CK MS X38 106Z

	CE	BW	WW	YW	ADG	MCE	MILK	MWW	STAY
EPD	16.1	0.5	85.6	132.4	0.29	10.9	31.7	74.5	14.1
Rank	10	35	25	20	25	2	4	10	70

	DOC	CW	YG	MARB	BF	REA	API	TI
EPD	14.7	52.5	-0.33	0.64	-0.042	1.27	166.5	98.7
Rank	20	3	80	4	95	3	10	5

BW 79 ADJ. WW



IRON CREEK JACKED UP 1263M Sells as Lot 14.

One of our primary goals in breeding decisions is creating repeatable and predictable excellence and this guy represents just that -top 10% calving ease, 25% growth traits, top 2-10% maternal traits, top 2-4% carcass traits and excellent Indexes. And he carries that trade mark Jackson phenotype! 796 pound weaning weigh and 1403 pound yearling weight.



FIVE STAR JACKSON J10 Sire of Lots 13 & 14.

Top 25% calving ease with top 2% average daily gain, outstanding maternal traits with top 3% milk, 5% maternal weaning and 15% maternal calving ease. Carcass your thing? 8202 is in the top 1% carcass weight, and ribeye area, top 10% marbling as well as API with a top 5% TI. Predictable excellence. Gained 4.56 pounds per day for 1360 pound yearling weight.

It is a pleasure to work on different matings for our Matron donor, as she seems to work so well with every bull. These Essential sons are genomic stand outs. For those cattlemen and women looking for a purebred bull with good looks and outstanding genetic numbers, these guys deserve consideration.



IRON CREEK MR ESSENTIAL 8202M Sells as Lot 15.

LOT **15** **IRON CREEK MR ESSENTIAL 8202M** **⚡GGP**  
 Homo Black || Homo Polled PB SM  
 1/21/2024 8202M ASA# 4378538

GIBBS 7382E BROAD RANGE		HOOK'S BEACON 56B						
<b>GIBBS 9114G ESSENTIAL</b>		<b>KBHR MATRON OF HONOR F202</b>						
GIBBS 7153E STAR 3136A		BAR CK MS X38 106Z						
CE	BW	WW	YW	ADG	MCE	MILK	MWW	STAY
EPD 13.3	-1.1	86.2	146.2	0.37	8.5	32.0	75.1	15.5
Rank 25	15	25	10	2	15	3	10	55
DOC	CW	YG	MARB	BF	REA	API	TI	
EPD 16.5	62.3	-0.42	0.53	-0.058	1.54	165.9	99.2	
Rank 10	1	40	10	85	1	10	4	
BW				ADJ. WW				



LOT **16** **IRON CREEK ESSENTIAL 8225M** **⚡GGP**  
 Homo Black || Homo Polled PB SM  
 1/24/2024 8225M ASA# 4378543

GIBBS 7382E BROAD RANGE		HOOK'S BEACON 56B						
<b>GIBBS 9114G ESSENTIAL</b>		<b>KBHR MATRON OF HONOR F202</b>						
GIBBS 7153E STAR 3136A		BAR CK MS X38 106Z						
CE	BW	WW	YW	ADG	MCE	MILK	MWW	STAY
EPD 12.7	0.8	97.2	159.7	0.39	8.0	32.0	80.5	17.6
Rank 35	40	4	2	1	20	3	1	30
DOC	CW	YG	MARB	BF	REA	API	TI	
EPD 12.6	72.0	-0.32	0.68	-0.014	1.71	177.1	106.5	
Rank 40	1	80	3	99	1	3	1	
BW				ADJ. WW				



IRON CREEK ESSENTIAL 8225M Sells as Lot 16.

With 10 traits in the top 4% of the breed, this Essential son is an outstanding prospect. Top 1% Average Daily Gain, maternal weaning weight, carcass weight, ribeye area and TI with a top 3% API and top 35% calving ease. Gained 4.62 pounds per day for a 1,359 pound yearling weight.



GIBBS 9114G ESSENTIAL Sire of Lots 15 & 16.

GENEX





IRON CREEK ERUPTION 531M Sells as Lot 17.

17	<b>LOT</b>		<b>IRON CREEK ERUPTION 531M</b>		<b>GGP</b>				
			Homo Black II Homo Polled		PB SM				
		1/16/2024		531M		ASA# 4378534			
		WS PROCLAMATION E202		HOOK'S BEACON 56B					
		<b>LBR5 GENESIS G69</b>		<b>KBHR MATRON OF HONOR F202</b>					
		LBR DIANA D69		BAR CK MS X38 106Z					
	CE	BW	WW	YW	ADG	MCE	MILK	MWW	STAY
EPD	<b>13.7</b>	<b>0.3</b>	<b>95.6</b>	<b>147.5</b>	<b>0.32</b>	<b>7.8</b>	<b>27.8</b>	<b>75.5</b>	<b>18.4</b>
Rank	25	35	5	10	10	20	20	5	20
	DOC	CW	YG	MARB	BF	REA	API	TI	
EPD	<b>16.6</b>	<b>52.4</b>	<b>-0.22</b>	<b>0.82</b>	<b>-0.033</b>	<b>0.99</b>	<b>185.7</b>	<b>108.3</b>	
Rank	10	3	99	1	99	25	2	1	
		BW		ADJ. WW					



LBR5 GENESIS G69 Sire of Lot 17.

Another "something different" for those looking for a Matron son. Sired by the power bull, Genesis, Eruption provides the growth we expect from Genesis with the calving ease and maternal and carcass traits virtually guaranteed by Matron. Study this guy closely and you find no holes -top 25% in 14 traits including top 25% calving ease, with top 5-10% growth, top 10-25% maternal traits, top 1% marbling with a staggering 184 API and 108 TI. This bull will work for the seedstock producer or the aggressive commercial breeder.



Eagle still gets it done-every time. This Eagle son is out of an excellent Hometown half-blood we purchase from Cow Camp Ranch-so he gets genetic excellence from both sides of the pedigree. Manifest is top 10-25% in nearly every critical production trait with a top 4% Stay and top 4% docility. He won't miss.



IRON CREEK MANIFEST 1004L Sells as Lot 18.

**LOT 18** **IRON CREEK MANIFEST 1004L** **GGP**

Homo Black II Homo Polled 5/8 SM 3/8 AN  
 8/3/2023 1004L ASA# 4341433

HOOK'S BLACK HAWK 50B G A R HOME TOWN  
**HOOK'S EAGLE 6E** CCR MS 8620 H TOWN 1002J  
 HOOK'S CRYSTAL 1C CCR MS 5459 BG TBR 8620F

	CE	BW	WW	YW	ADG	MCE	MILK	MWW	STAY
EPD	15.0	-3.2	84.4	136.1	0.32	6.7	21.9	64.8	20.4
Rank	25	10	25	20	20	55	70	40	4
	DOC	CW	YG	MARB	BF	REA	API	TI	
EPD	18.3	51.0	-0.24	0.59	-0.022	1.11	169.8	95.5	
Rank	4	10	45	20	70	4	10	10	
	BW				ADJ. WW				



**LOT 19** **IRON CREEK DEADWOOD 3286L** **GGP**

Homo Black II Homo Polled 1/4 SM 3/4 AN  
 8/28/2023 3286L ASA# 4322388

POSS MAVERICK G A R HOME TOWN  
**POSS DEADWOOD** CCR MS 8620 H TOWN 1002J  
 POSS ELLUNAMERE 399 CCR MS 5459 BG TBR 8620F

	CE	BW	WW	YW	ADG	MCE	MILK	MWW	STAY
EPD	12.4	1.2	105.1	179.6	0.47	7.2	25.6	79.0	13.5
Rank	55	75	1	1	1	45	40	2	65
	DOC	CW	YG	MARB	BF	REA	API	TI	
EPD	15.1	87.3	0.07	1.18	0.010	0.85	182.1	115.1	
Rank	20	1	99	1	99	25	2	1	
	BW				ADJ. WW				



IRON CREEK DEADWOOD 3286L Sells as Lot 19.

**GROWTH!!** I believe 3286 is the top weaning weight, yearling weight and average daily gain EPD bull in the sale-elite top 1% EPDs in every one of these traits and top 1% for carcass weight, marbling and Terminal Index with a super strong, top 2%, API of 182. If you are selling pounds and/or quality meat-3286 is your man.



CCR MS 8620 H TOWN 1002J Dam of Lots 18 & 19.

Growth and maternal excellence in Raven. Top 1% average daily gain, 2% maternal weaning weight, 5% milk and 25% maternal calving ease. Ideal for the commercial cattle operation that sells its calves by the pound and desires to retain top in females. GAINED 5.57 POUNDS PER DAY FOR A 1585 POUND YEARLING WEIGHT!



IRON CREEK RAVEN F223M Sells as Lot 20.

We have been honored to own the Blackbird donor and she continues to pass her massive body and growth to her offspring—every time! Rest assured your Blackbird son will add pounds and depth to your herd.

**LOT 20 IRON CREEK RAVEN F223M** **GGP**

Homo Black || Homo Polled 1/2 SM 1/2 AN  
 1/25/2024 F223M ASA# 4378546

GIBBS 7382E BROAD RANGE BASIN PAYWEIGHT 1682  
**GIBBS 9114G ESSENTIAL MONTANA BLACKBIRD 7250**  
 GIBBS 7153E STAR 3136A GALAXY BLACKBIRD 2102

	CE	BW	WW	YW	ADG	MCE	MILK	MWW	STAY
EPD	14.4	-2.5	94.2	160.6	0.41	8.6	31.4	79.1	17.3
Rank	30	15	5	2	1	25	10	2	25
	DOC	CW	YG	MARB	BF	REA	API	TI	
EPD	14.8	74.2	0.07	0.39	0.034	0.90	154.4	95.6	
Rank	25	1	99	50	99	20	20	10	
	BW					ADJ. WW			

**LOT 21 IRON CREEK BLACKBIRD B37M**

Homo Black || Homo Polled 1/2 SM 1/2 AN  
 1/10/2024 B37M ASA# 4378532

GIBBS 7382E BROAD RANGE BASIN PAYWEIGHT 1682  
**GIBBS 9114G ESSENTIAL MONTANA BLACKBIRD 7250**  
 GIBBS 7153E STAR 3136A GALAXY BLACKBIRD 2102

	CE	BW	WW	YW	ADG	MCE	MILK	MWW	STAY
EPD	16.0	-2.3	92.4	155.4	0.39	9.5	31.4	78.2	16.2
Rank	15	15	10	3	2	15	10	3	35
	DOC	CW	YG	MARB	BF	REA	API	TI	
EPD	16.0	60.9	-0.02	0.55	0.024	0.92	162.3	98.9	
Rank	15	3	95	25	99	15	10	4	
	BW					ADJ. WW			



IRON CREEK BLACKBIRD B37M Sells as Lot 21.

Love this bull- 12 traits in the top 15% of the breed including top 15% calving ease combined with top 10% weaning weight, 3% yearling weight and 2% average daily gain. Outstanding maternal traits with top 20-25% ribeye area and marbling. A beast that will add pounds to your calves and give you outstanding daughters that will do the same! GAINED 5.32 POUNDS PER DAY FOR A 1424 POUND YEARLING WEIGHT!



MONTANA BLACKBIRD 7250 Dam of Lots 20 & 21.



I C DRAKE JET JACKSON 3256L Sells as Lot 22.



LCDR MS JETTA 93J Dam of Lot 22.

LOT <b>22</b>	<b>I C DRAKE JET JACKSON 3256L</b>		<b>GGP</b>						
Hetero Black // Homo Polled		PB SM							
8/29/2023		3256L	ASA# 4322386						
HOOK'S FULL FIGURES 11F		W/C FORT KNOX 609F							
<b>FIVE STAR JACKSON J10</b>		<b>LCDR MS JETTA 93J</b>							
KBHR F316		WS MISS SUGAR C4							
	CE	BW	WW	YW	ADG	MCE	MILK	MWW	STAY
EPD	<b>13.9</b>	<b>1.5</b>	<b>90.4</b>	<b>143.5</b>	<b>0.33</b>	<b>8.0</b>	<b>32.0</b>	<b>77.1</b>	<b>13.6</b>
Rank	20	55	15	10	10	20	3	3	75
	DOC	CW	YG	MARB	BF	REA	API	TI	
EPD	<b>17.4</b>	<b>44.6</b>	<b>-0.28</b>	<b>0.66</b>	<b>-0.045</b>	<b>0.97</b>	<b>164.3</b>	<b>100.6</b>	
Rank	4	10	90	3	95	30	10	3	
	BW				ADJ. WW				

Sired by Jackson and out of a \$27,000 direct daughter of WS Miss Sugar C4, the most prolific bull producing female in the history of the Simmental breed, this guy was destined to be good-and he is! Top 20% calving ease with top 10% growth, top 3% maternal traits and marbling, top 4% docility. Royal breeding with royal results.



Out of our beautiful Guardian daughter purchased from Cow Camp Ranch and sired by War Paint, 014M is double bred big bodied and carries great balance across his EPD profile, resulting in a top 3% API of 177 and top 10% TI of 96. A stout breeding bull.



IRON CREEK WAR PAINT 014M Sells as Lot 23.



23	<b>LOT</b>		<b>IRON CREEK WAR PAINT 014M</b>		<b>ØGGP</b>					
	Homo Black    Homo Polled		5/8 SM 3/8 AN		ASA# 4378382					
1/20/2024		014M		ASA# 4378382						
TJ CHIEF 460G		CLRS GUARDIAN 317G		TJ WAR PAINT 759J						
TJ 2D		CCR MS 6175 GUARD 1003J		CCR MS 2407 WD RNG 6175D						
EPD	CE	BW	WW	YW	ADG	MCE	MILK	MWW	STAY	
Rank	13.9	-2.4	86.3	132.6	0.29	8.3	30.6	73.7	25.1	
	35	15	20	25	35	30	10	10	1	
EPD	DOC	CW	YG	MARB	BF	REA	API	TI		
Rank	11.8	42.5	-0.04	0.64	0.009	0.61	177.3	96.3		
	60	25	95	15	95	65	3	10		
	BW		ADJ. WW							
	84		84							



24	<b>LOT</b>		<b>HARLAN BULL 11M</b>		<b>ØGGP</b>					
	Homo Black    Homo Polled		5/8 SM 3/8 AN		ASA# 4420716					
2/5/2024		11M		ASA# 4420716						
TJ CHIEF 460G		CLRS GUARDIAN 317G		TJ WAR PAINT 759J						
TJ 2D		CCR MS 6175 GUARD 1003J		CCR MS 2407 WD RNG 6175D						
EPD	CE	BW	WW	YW	ADG	MCE	MILK	MWW	STAY	
Rank	12.2	-1.2	88.3	130.3	0.26	7.1	30.6	74.7	20.8	
	60	30	15	25	55	50	10	10	3	
EPD	DOC	CW	YG	MARB	BF	REA	API	TI		
Rank	12.6	51.2	-0.02	0.52	0.019	0.75	157.7	92.4		
	50	10	95	30	99	40	15	15		
	BW		ADJ. WW							
	79		554							



HARLAN BULL 11M Sells as Lot 24.

This Warpaint son is an attractive baldy that has a solid set of EPDs. He also gained 4.4lbs a day.



CCR MS 6175 GUARD 1003J Dam of Lots 23 & 24.

One of the most unique bulls we have raised due to his pedigree, EPDs, near perfect phenotype . . . and he is red. Sired by the outstanding Red Angus bull "Bieber Jumpstart J137" and out of "Five Star Jazzy J14," the full sister to the \$65,000 "Five Star Jackson." EPDs show him in the top 5% WW, 3% YW, 4% ADG, 5% Milk, 2% MWW, 3% Doc, 10% MCE, 10% TI, 25% CE and BW. He gained 4.93 lbs/day- YW 1385.



BIEBER JUMPSTART J137 Sire of Lot 25.



DRAKE BULL M1 Sells as Lot 25.

25	<b>LOT</b>		<b>DRAKE BULL M1</b>		<b>GGP</b>				
	Red II Homo Polled		1/2 SM 1/2 AR		PB SM				
2/25/2024		M1		ASA# 4419203					
BIEBER CL ENERGIZE F121			HOOK'S FULL FIGURES 11F						
<b>BIEBER JUMPSTART J137</b>		<b>FIVE STAR JAZZY J14</b>							
BIEBER GALLEE 390G		KBHR F316							
EPD	CE	BW	WW	YW	ADG	MCE	MILK	MWW	STAY
Rank	14.9	-1.4	94.4	154.2	0.37	10.2	31.8	78.9	11.0
	25	25	5	3	4	10	5	2	85
EPD	DOC	CW	YG	MARB	BF	REA	API	TI	
Rank	18.5	45.0	-0.07	0.48	0.009	0.75	145.5	97.1	
	3	20	90	35	95	40	35	10	
BW		ADJ. WW		719					



26	<b>LOT</b>		<b>DRAKE BULL M3</b>		<b>GGP</b>				
	Red II Homo Polled		1/2 SM 1/2 AR		PB SM				
2/28/2024		M3		ASA# 4419202					
KBHR SNIPER E036			HOOK'S FULL FIGURES 11F						
<b>WS GADGET 40G</b>		<b>FIVE STAR JAZZY J14</b>							
WS EMOTION E127		KBHR F316							
EPD	CE	BW	WW	YW	ADG	MCE	MILK	MWW	STAY
Rank	17.2	-1.7	92.2	142.7	0.32	11.0	27.3	73.3	12.3
	4	10	10	10	10	2	20	10	85
EPD	DOC	CW	YG	MARB	BF	REA	API	TI	
Rank	16.9	36.4	-0.29	0.45	-0.061	0.77	160.6	100.2	
	10	25	90	15	70	75	15	4	
BW		ADJ. WW		642					



DRAKE BULL M3 Sells as Lot 26.

A purebred red bull we can't say enough about. He is an ET calf out of the full sister to the \$65,000 "Five Star Jackson." Sired by the outstanding W.S. Gadget 40G. A great looking bull with EPDs- CE Top 4%, BW, WW, YW, MWW, and Doc. all in the Top 10%. ADG, Marb, and API all in the Top 15%, MCE top 2%, Milk top 20%, and a 100.3 TI Top 4%. Gain 4.05 lbs. With a YW of 1287.



Five Star Jazzy J14 Dam of Lots 25, 26.



IRON CREEK JESSE 278L Sells as Lot 27.

<b>LOT</b> <b>27</b>	<b>IRON CREEK JESSE 278L</b>	<b>GGP</b>
	Homo Black // Homo Polled	PB SM
	9/13/2023	278L ASA# 4360383

HOOK'S FULL FIGURES 11F  
**FIVE STAR JACKSON J10**  
 KBHR F316

GW-WBF SUBSTANCE 820Y  
**HOOK'S CRYSTAL 1C**  
 HOOK'S UNDERESTIMATED 6U

	CE	BW	WW	YW	ADG	MCE	MILK	MWW	STAY
EPD	11.5	3.5	98.1	160.0	0.39	7.0	26.7	75.6	12.2
Rank	50	90	4	2	1	35	25	5	85
	DOC	CW	YG	MARB	BF	REA	API	TI	
EPD	15.4	48.9	-0.33	0.83	-0.054	1.11	168.5	106.9	
Rank	15	5	80	1	85	10	10	1	

BW **97** ADJ. WW

Power and grace with top 1% average daily gain, top 25% milk and 5% maternal weaning weight, 1% marbling and 10% ribeye area with a top 1% Terminal Index. Jesse will add pounds and phenotype to your calf crop.



HOOK'S CRYSTAL 1C Dam of Lot 27.

Crystal 1C is an iconic female in the Simmental breed. Her most famous son, Hook's Eagle, is a bull that does more right, more often, than any bull we have ever used. He creates powerful bulls and outstanding producing females and was the most used bull in the entire Simmental breed for a number of years. Crystal consistently passes her massive body and outstanding growth traits to her sons and daughters, and the maternal half brothers to Eagle available in our sale are a genuine opportunity for progressive seedstock and commercial breeders to add the genetics of this unique female to your herd.

The Jackson sons of Crystal are the most attractive we have ever had from her. As a group they carry her power with his stout, attractive phenotype.

Elite balance with top 15% calving ease, average daily gain and maternal calving ease, top 25% milk, 20% maternal weaning weight, 1% marbling, 20% ribeye area with a 171 API and a top 2% Terminal Index. Predictable and repeatable growth and phenotype.



IRON CREEK JACKMAN 313L Sells as Lot 28.

**LOT 28** **IRON CREEK JACKMAN 313L** **GGP**

Hetero Black II Homo Polled PB SM  
 9/7/2023 313L ASA# 4360386

HOOK'S FULL FIGURES 11F GW-WBF SUBSTANCE 820Y  
**FIVE STAR JACKSON J10** **HOOK'S CRYSTAL 1C**  
 KBHR F316 HOOK'S UNDERESTIMATED 6U

	CE	BW	WW	YW	ADG	MCE	MILK	MWW	STAY
EPD	14.4	-1.1	84.9	134.1	0.31	8.8	26.7	69.0	12.4
Rank	15	15	25	20	15	15	25	20	85
	DOC	CW	YG	MARB	BF	REA	API	TI	
EPD	15.5	41.1	-0.33	0.77	-0.053	1.03	171.4	103.0	
Rank	15	15	80	1	85	20	5	2	
		BW		ADJ. WW					
		79							



**LOT 29** **IRON CREEK ESSENTIAL F241M** **GGP**

Homo Black II Homo Polled PB SM  
 1/10/2024 F241M ASA# 4378533

GIBBS 7382E BROAD RANGE GW-WBF SUBSTANCE 820Y  
**GIBBS 9114G ESSENTIAL** **HOOK'S CRYSTAL 1C**  
 GIBBS 7153E STAR 3136A HOOK'S UNDERESTIMATED 6U

	CE	BW	WW	YW	ADG	MCE	MILK	MWW	STAY
EPD	16.0	-3.4	84.1	138.9	0.34	9.2	27.0	68.9	20.6
Rank	10	2	30	15	10	10	20	25	5
	DOC	CW	YG	MARB	BF	REA	API	TI	
EPD	15.7	36.9	-0.24	0.47	-0.013	1.01	177.8	98.0	
Rank	10	20	95	15	99	25	3	5	
		BW		ADJ. WW					



IRON CREEK ESSENTIAL F241M Sells as Lot 29.

A purebred Essential son of Crystal with broad based excellence in his genetic profile. Outstanding calving ease (top 10% CE and top 2% birth weight) with top 10% average daily gain, breed leading maternal and carcass traits, a top 10% docility ranking and top 3% API and 5% TI- an outstanding breeding bull from every angle.





An excellent purebred Simmental by the commercial bull producer, LBRS Genesis, and Crystal. Top 10% growth numbers with top 10% carcass weight, 2% marbling, 4% docility, 5% API and top 1% Terminal Index. If you sell on the grid this guy will give you great growth and valuable carcasses.



IRON CREEK NEW EAGLE 41L Sells as Lot 30.

**LOT 30** **IRON CREEK NEW EAGLE 41L** **GGP**

Homo Black II Homo Polled PB SM  
 9/20/2023 41L ASA# 4360381

WS PROCLAMATION E202 GW-WBF SUBSTANCE 820Y

**LBRS GENESIS G69** **HOOK'S CRYSTAL 1C**  
 LBR DIANA D69 HOOK'S UNDERESTIMATED 6U

	CE	BW	WW	YW	ADG	MCE	MILK	MWW	STAY
EPD	11.7	0.4	95.0	143.1	0.30	5.5	22.7	70.2	14.5
Rank	50	35	10	10	20	60	55	20	65
	DOC	CW	YG	MARB	BF	REA	API	TI	
EPD	17.5	46.1	-0.26	0.76	-0.052	0.89	171.1	105.5	
Rank	4	10	95	2	85	45	5	1	
		BW		ADJ. WW					
		<b>84</b>							



**LOT 31** **IRON CREEK ESSENTIAL 8630M** **GGP**

Black II Polled 3/8 SM 1/2 KB 1/8 AN  
 1/31/2024 8630M ASA# 4378549

SMO SUMO CATTLE CO MICHIFUKU F126 GW-WBF SUBSTANCE 820Y

**MYM ARUBIAL UNITED P0342 ET** **HOOK'S CRYSTAL 1C**  
 MACQUARIE WAGYU C1624 ET HOOK'S UNDERESTIMATED 6U

	CE	BW	WW	YW	ADG	MCE	MILK	MWW	STAY
EPD	13.3	0.3	62.2	88.6	0.16	7.6	19.0	50.0	14.8
Rank	45	55	95	95	99	40	90	95	50
	DOC	CW	YG	MARB	BF	REA	API	TI	
EPD	12.7	37.4	-0.21	0.55	-0.024	0.83	131.9	73.4	
Rank	45	40	55	25	70	25	55	80	
		BW		ADJ. WW					



IRON CREEK ESSENTIAL 8630M Sells as Lot 31.

Ok... we admit we didn't do this on purpose. We flushed Crystal to Essential but a little mix up at the lab gave us three Wagyu offspring from this great cow. After a little detective work we determined the lab used Arubial United, an Australia Wagyu bull-described by ABS as the best combination bull in the Wagyu breed. United ranks in the top 5% of the Wagyu breed for growth, carcass weight, marbling fineness and all of the Wagyu Indexes. If you are selling meat directly to consumers, or just want to up your grilling game, 8630M is a unique combination of a high growth, high marbling Simmental crossed with a top Wagyu bull-resulting in a 1/2 Wagyu, 3/8 Simmental, 1/4 Angus- a meat eaters dream! Someone please bid it up on this guy so we can prove Corey wrong.

Top numbers in both his own performance and his EPDs. Good CE, YW, and Carcass EPDs. One of the top gainers at 5 lbs per day. Projected YW of 1450 lbs.



DRAKE BULL K92M Sells as Lot 32.

LOT  
**32**

**DRAKE BULL K92M**

Homo Black // Homo Polled  
1/30/2024 K92M ASA# 4419175

**GGP**

PB SM

HOOK'S FULL FIGURES 11F  
**FIVE STAR JACKSON J10**  
KBHR F316

TJ BONAFIDE 647H  
**DRAKE MISS ZB92K**  
DRAKE MISS Z92B

	CE	BW	WW	YW	ADG	MCE	MILK	MWW	STAY	
EPD	15.9	0.0	91.1	139.4	0.30	8.4	27.9	73.3	9.2	
Rank	10	30	15	15	20	15	20	10	99	
	DOC	CW	YG	MARB	BF	REA	API	TI		
EPD	17.8	40.4	-0.32	0.60	-0.057	0.94	157.0	101.0		
Rank	3	15	80	5	85	35	15	3		
		BW				ADJ. WW				
		76				657				



LOT  
**33**

**DRAKE BULL K158M**

Homo Black // Homo Polled  
2/19/2024 K158M ASA# 4419200

**GGP**

PB SM

HOOK'S FULL FIGURES 11F  
**FIVE STAR JACKSON J10**  
KBHR F316

CLRS GUARDIAN 317G  
**IRON CREEK INSPIRE D158K**  
TJ 20H

	CE	BW	WW	YW	ADG	MCE	MILK	MWW	STAY	
EPD	15.8	-1.6	89.1	130.8	0.26	9.1	28.0	72.5	17.9	
Rank	10	10	15	25	40	10	15	10	25	
	DOC	CW	YG	MARB	BF	REA	API	TI		
EPD	12.3	35.9	-0.40	0.48	-0.043	1.26	169.2	98.7		
Rank	45	25	50	10	95	3	10	5		
		BW				ADJ. WW				
		79				645				



DRAKE BULL K158M Sells as Lot 33.

A really good black white faced bull with great numbers across the board. Twelve numbers in the top 30% or better. Gained 4.44 lbs/day and projected YW of 1350 lbs.





FIVE STAR JACKSON J10 Sire of Lots 34-49.

### FIVE STAR JACKSON J10

The \$65,000 “next step” in genetic advancement-outstanding phenotype combined with genomic excellence. Jackson marks his calves with head turning phenotype and balance. The bulls are ultra complete in their build and the females perhaps will be his lasting legacy. The Jackson progeny represents our largest sire group and we give them high praise for uniformity and consistency.

LOT **34** **DRAKE BULL J1M** **GGP**  
 Hetero Black // Homo Polled PB SM  
 3/6/2024 J1M ASA# 4419184

HOOK'S FULL FIGURES 11F KBHR BACKROADS G014  
**FIVE STAR JACKSON J10** **DRAKE MISS 1J**  
 KBHR F316 TJ 133G

	CE	BW	WW	YW	ADG	MCE	MILK	MWW	STAY
EPD	15.3	-1.5	73.7	112.8	0.24	10.0	30.3	67.1	17.8
Rank	10	10	70	60	55	4	10	30	25
	DOC	CW	YG	MARB	BF	REA	API	TI	
EPD	17.1	33.2	-0.22	0.78	-0.026	0.79	178.0	96.3	
Rank	5	30	99	1	99	70	3	10	
	BW				ADJ. WW				
	<b>80</b>				<b>711</b>				

Very attractive bull with outstanding numbers. 8 numbers in the top 10%.. CF, BW, MCE, Milk, Doc, Marb, API and TI. WW 711 lbs, YW 1329. Gained 4.22 lbs/day



DRAKE BULL J1M Sells as Lot 34.

LOT **35** **DRAKE BULL G21M** **GGP**  
 Red // Homo Polled PB SM  
 3/16/2024 G21M ASA# 4419174

HOOK'S FULL FIGURES 11F WS ALL ABOARD B80  
**FIVE STAR JACKSON J10** **DRAKE MISS Y21G**  
 KBHR F316 **DRAKE MISS W21Y**

	CE	BW	WW	YW	ADG	MCE	MILK	MWW	STAY
EPD	17.0	-1.9	75.7	118.3	0.27	10.1	25.7	63.3	14.0
Rank	4	10	60	45	35	4	30	45	70
	DOC	CW	YG	MARB	BF	REA	API	TI	
EPD	16.2	31.2	-0.34	0.69	-0.052	0.94	170.8	96.4	
Rank	10	40	75	2	85	35	5	10	
	BW				ADJ. WW				
	<b>77</b>				<b>688</b>				

Excellent red bull with great EPDs. Top 4% CE, a 170 AIP, and 96.4 TI, both in the top 10%. Gained 4.78 lbs/day with a projected YW of 1453 lbs.



DRAKE BULL G21M Sells as Lot 35.



DRAKE JACKSON M30 Sells as Lot 36.

LOT **36** **DRAKE JACKSON M30** **GGP**

Hetero Black II Homo Polled PB SM  
 2/5/2024 M30 ASA# 4427072

HOOK'S FULL FIGURES 11F W/C EXECUTIVE ORDER 8543B  
**FIVE STAR JACKSON J10** **DRAKE DIAMOND**  
 KBHR F316 DRAKE MISS T12

	CE	BW	WW	YW	ADG	MCE	MILK	MWW	STAY
EPD	18.5	-1.4	81.2	124.6	0.27	11.3	26.7	67.2	16.8
Rank	2	10	40	35	35	1	25	30	40

	DOC	CW	YG	MARB	BF	REA	API	TI
EPD	15.3	19.8	-0.21	0.62	-0.037	0.50	174.5	96.8
Rank	15	80	99	4	99	99	4	10

BW **77** ADJ. WW **737**

Jackson M30 puts together some traits on paper and phenotypically that make him a stand out in anyone's book. A beautifully constructed powerhouse with top 2% calving ease, a 1373 lb. yearling weight and a top 4% API. This is what Jackson does consistently, superb calving ease without sacrificing growth and everything else.



DRAKE BULL 202M Sells as Lot 37.

LOT **37** **DRAKE BULL 202M** **GGP**

Hetero Black II Homo Polled PB SM  
 3/16/2024 202M ASA# 4419194

HOOK'S FULL FIGURES 11F TJ PLATTE RIVER 370D  
**FIVE STAR JACKSON J10** **DRAKE MISS E202G**  
 KBHR F316 DRAKE MISS W202E

	CE	BW	WW	YW	ADG	MCE	MILK	MWW	STAY
EPD	18.4	-2.2	78.7	114.1	0.22	10.4	26.9	66.2	13.5
Rank	2	5	50	55	70	3	25	35	75

	DOC	CW	YG	MARB	BF	REA	API	TI
EPD	18.1	32.0	-0.16	0.67	-0.014	0.68	169.5	96.9
Rank	3	35	99	3	99	90	10	10

BW **67** ADJ. WW **649**

A great Jackson son with 8 of his EPDs in the Top 10%, CE Top 10%, BW Top 5%, 170 API, 100 TI, Both in the Top 10%.



HARLAN BULL K24L Sells as Lot 38.

LOT **38** **HARLAN BULL K24L** **GGP**

Hetero Black II Homo Polled PB SM  
 12/23/2023 K24L ASA# 4420708

HOOK'S FULL FIGURES 11F DRAKE BULL B99D  
**FIVE STAR JACKSON J10** **HARLAN MS F24K**  
 KBHR F316 HARLAN MISS D24F

	CE	BW	WW	YW	ADG	MCE	MILK	MWW	STAY
EPD	16.6	-2.0	80.2	117.6	0.23	9.7	28.6	68.7	14.3
Rank	5	10	40	50	65	10	15	25	65

	DOC	CW	YG	MARB	BF	REA	API	TI
EPD	13.3	39.4	-0.39	0.58	-0.061	1.13	165.4	96.4
Rank	30	15	55	5	70	10	10	10

BW **77** ADJ. WW **706**

This Jackson son is a bull that should be safe to use on heifers with calving ease in the Top 5% and BW in the Top 10% as well as API and TI.



LOT **39** **HARLAN BULL H364M** **GGP**

Homo Black II Homo Polled PB SM  
 1/4/2024 H364M ASA# 4420712

HOOK'S FULL FIGURES 11F TJ PLATTE RIVER 370D  
**FIVE STAR JACKSON J10** **HARLAN SAVAGE F364H**  
 KBHR F316 DRAKE TWILLY

	CE	BW	WW	YW	ADG	MCE	MILK	MWW	STAY
EPD	14.5	-2.1	74.6	112.3	0.24	9.1	27.0	64.1	15.3
Rank	15	10	65	60	55	10	20	40	55
	DOC	CW	YG	MARB	BF	REA	API	TI	
EPD	17.9	37.4	-0.23	0.61	-0.034	0.82	164.2	93.0	
Rank	3	20	99	4	99	65	10	15	
BW					ADJ. WW				
<b>79</b>					<b>613</b>				

This Jackson bull is a calving ease bull that is also in the Top 3% for docility and top 4% for Marb.



HARLAN BULL H364M Sells as Lot 39/.

LOT **40** **HARLAN BULL K69L** **GGP**

Homo Black II Homo Polled PB SM  
 12/24/2023 K69L ASA# 4420706

HOOK'S FULL FIGURES 11F IRON CREEK C23A1  
**FIVE STAR JACKSON J10** **HARLAN MS B69K**  
 KBHR F316 DRAKE CLASSIC

	CE	BW	WW	YW	ADG	MCE	MILK	MWW	STAY
EPD	15.4	0.6	89.5	137.7	0.30	9.0	30.3	74.9	13.8
Rank	10	40	15	15	20	10	10	10	70
	DOC	CW	YG	MARB	BF	REA	API	TI	
EPD	13.1	43.4	-0.17	0.59	-0.032	0.71	162.7	98.6	
Rank	35	10	99	5	99	85	10	5	
BW					ADJ. WW				
<b>79</b>					<b>730</b>				

A Jackson son that is in the top 15% or better in 10 traits. He should calve easy and his calves should get up and grow.



HARLAN BULL K69L Sells as Lot 40.

LOT **41** **DRAKE JACKSON M121** **GGP**

Homo Black II Homo Polled PB SM  
 1/20/2024 M121 ASA# 4427077

HOOK'S FULL FIGURES 11F TJ PLATTE RIVER 370D  
**FIVE STAR JACKSON J10** **DRAKE RIVER LADY**  
 KBHR F316 DRAKE DIAMOND

	CE	BW	WW	YW	ADG	MCE	MILK	MWW	STAY
EPD	16.1	-2.0	77.3	111.4	0.21	9.7	28.1	66.7	13.0
Rank	10	10	55	65	80	10	15	30	80
	DOC	CW	YG	MARB	BF	REA	API	TI	
EPD	15.6	29.9	-0.11	0.55	-0.009	0.55	157.7	92.5	
Rank	15	45	99	10	99	99	15	15	
BW					ADJ. WW				
<b>82</b>					<b>820</b>				

Jackson M121 presents power and growth in a top 10% CE package. Posting an 820 lb. weaning weight, making him the number 2 weaning weight bull in the sale and a 1404 lb. yearling weight. Extremely deep bodied, sound moving, phenotypically excellent bull with a top 15% API.



DRAKE JACKSON M121 Sells as Lot 41.



HARLAN BULL K40L Sells as Lot 42.

**LOT 42 HARLAN BULL K40L** **GGP**

Homo Black II Homo Polled PB SM  
 12/26/2023 K40L ASA# 4420707

HOOK'S FULL FIGURES 11F TJ PLATTE RIVER 370D  
**FIVE STAR JACKSON J10** **HARLAN MS D40K**  
 KBHR F316 DRAKE MISS U40D

	CE	BW	WW	YW	ADG	MCE	MILK	MWW	STAY
EPD	14.6	0.7	80.4	119.1	0.24	9.2	27.8	67.9	14.1
Rank	15	40	40	45	55	10	20	25	70

	DOC	CW	YG	MARB	BF	REA	API	TI
EPD	16.1	28.1	-0.24	0.51	-0.038	0.70	153.5	90.8
Rank	10	50	95	10	99	85	20	20

**BW 91 ADJ. WW 669**

The Jackson x Platte River combo will rarely let you down as far as phenotype and EPD profile. They are solid and this bull is no exception.



DRAKE JACKSON M48 Sells as Lot 43.

**LOT 43 DRAKE JACKSON M48** **GGP**

Homo Black II Polled PB SM  
 1/12/2024 M48 ASA# 4427076

HOOK'S FULL FIGURES 11F DRAKE HEADLINER  
**FIVE STAR JACKSON J10** **DRAKE RAGE J10**  
 KBHR F316 DRAKE RAGE

	CE	BW	WW	YW	ADG	MCE	MILK	MWW	STAY
EPD	14.1	-0.4	76.8	111.4	0.22	8.8	26.3	64.6	10.6
Rank	20	20	55	65	70	15	25	40	95

	DOC	CW	YG	MARB	BF	REA	API	TI
EPD	12.5	24.8	-0.31	0.62	-0.057	0.71	152.2	92.5
Rank	40	60	85	4	85	85	20	15

**BW 83 ADJ. WW 777**

This bull looks a lot like Jackson himself. Posting one of the top weaning weights in the sale at 777 lbs. and a 1352 lb. yearling weight, M48 is a powerful combination of balanced phenotype, power and growth.



IRON CREEK 3007M Sells as Lot 44.

**LOT 44 IRON CREEK 3007M**

Black II Polled 5/8 SM 3/8 AN  
 2/28/2024 3007M ASA# 4445831

HOOK'S FULL FIGURES 11F S A V BISMARCK 5682  
**FIVE STAR JACKSON J10** **MS NLC BISMARCK 3007A**  
 KBHR F316 MS NLC OLIE Y1023

	CE	BW	WW	YW	ADG	MCE	MILK	MWW	STAY
EPD	16.3	-0.9	86.0	134.8	0.30	10.4	33.9	77.0	12.0
Rank	15	35	20	20	30	10	2	3	80

	DOC	CW	YG	MARB	BF	REA	API	TI
EPD	13.6	38.8	-0.19	0.54	-0.025	0.79	147.3	93.3
Rank	35	35	60	25	70	35	30	15

**BW 76 ADJ. WW 665**

3007's dam is a twelve year old cow- and every bull she has had has sold as a breeding bull. This Jackson son is well balanced with excellent calving ease along with top growth and maternal traits and strong carcass.

**LOT 45 HARLAN BULL G75M** **GGP**

Hetero Black // Homo Polled PB SM  
 3/15/2024 G75M ASA# 4420713

HOOK'S FULL FIGURES 11F HOOK'S EQUINOX 15E  
**FIVE STAR JACKSON J10** **DRAKE MISSA75G**  
 KBHR F316 DRAKE GLORIA X75A

	CE	BW	WW	YW	ADG	MCE	MILK	MWW	STAY
EPD	<b>13.8</b>	<b>-0.3</b>	<b>82.0</b>	<b>118.3</b>	<b>0.23</b>	<b>7.8</b>	<b>26.0</b>	<b>66.9</b>	<b>9.9</b>
Rank	20	25	35	45	65	20	30	30	99

	DOC	CW	YG	MARB	BF	REA	API	TI
EPD	<b>14.8</b>	<b>20.1</b>	<b>-0.36</b>	<b>0.38</b>	<b>-0.069</b>	<b>0.73</b>	<b>139.3</b>	<b>89.7</b>
Rank	20	80	65	20	70	80	40	20

**BW** **ADJ. WW**  
**84** **726**

This blaze face bull has a solid EPD profile and a phenomenal phenotype. He also had an ADG of 4.8.



HARLAN BULL G75M Sells as Lot 45.

**LOT 46 DRAKE BULL G765M** **GGP**

Hetero Black // Homo Polled 3/4 SM 1/4 AN  
 3/18/2024 G765M ASA# 4419195

HOOK'S FULL FIGURES 11F CCR WIDE RANGE 9005A  
**FIVE STAR JACKSON J10** **DRAKE MISS X765G**  
 KBHR F316 DRAKE MISS L765X

	CE	BW	WW	YW	ADG	MCE	MILK	MWW	STAY
EPD	<b>16.6</b>	<b>-1.4</b>	<b>81.3</b>	<b>129.8</b>	<b>0.30</b>	<b>10.3</b>	<b>22.2</b>	<b>62.8</b>	<b>11.7</b>
Rank	15	25	30	30	30	10	65	50	80

	DOC	CW	YG	MARB	BF	REA	API	TI
EPD	<b>12.4</b>	<b>29.2</b>	<b>-0.30</b>	<b>0.37</b>	<b>-0.042</b>	<b>0.85</b>	<b>138.2</b>	<b>86.5</b>
Rank	50	65	30	50	45	25	45	30

**BW** **ADJ. WW**  
**75** **625**

A top Jackson son with good CE, BW, WW, YW and ADG numbers. Gained 4.31 lbs per day with a projected YW of 1315 lbs.



DRAKE BULL G765M Sells as Lot 46.

**LOT 47 DRAKE BULL B92M** **GGP**

Hetero Black // Homo Polled PB SM  
 3/19/2024 B92M ASA# 4419188

HOOK'S FULL FIGURES 11F ELM-MOUND/GS STANDSALONE  
**FIVE STAR JACKSON J10** **DRAKE MISS Z92B**  
 KBHR F316 DRAKE MISS W92Z

	CE	BW	WW	YW	ADG	MCE	MILK	MWW	STAY
EPD	<b>18.9</b>	<b>-2.9</b>	<b>67.3</b>	<b>96.4</b>	<b>0.18</b>	<b>10.4</b>	<b>26.5</b>	<b>60.1</b>	<b>12.0</b>
Rank	1	3	90	90	95	3	25	60	85

	DOC	CW	YG	MARB	BF	REA	API	TI
EPD	<b>16.2</b>	<b>24.4</b>	<b>-0.35</b>	<b>0.14</b>	<b>-0.068</b>	<b>0.76</b>	<b>135.4</b>	<b>78.3</b>
Rank	10	65	70	60	70	75	45	60

**BW** **ADJ. WW**  
**68** **730**

Should be a good calving ease sire with CE Top 1% and BW Top 3%. Looks like most of our Jackson calves- Big volume, lots of muscle, great feet and legs, and a stunning look. WW 730 lbs with a projected YW 1363 lbs.



DRAKE BULL B92M Sells as Lot 47.



DRAKE JACKSON M122 Sells as Lot 48.

LOT  
**48**

**DRAKE JACKSON M122**

Homo Black II Homo Polled  
3/6/2024 M122

**GGP**

1/2 SM 1/4 AN 1/4 CS  
ASA# 4427073

HOOK'S FULL FIGURES 11F

**FIVE STAR JACKSON J10**  
KBHR F316

**SA200**

	CE	BW	WW	YW	ADG	MCE	MILK	MWW	STAY		
EPD	<b>14.1</b>	<b>0.2</b>	<b>78.9</b>	<b>124.1</b>	<b>0.28</b>	<b>9.0</b>	<b>24.1</b>	<b>63.4</b>	<b>6.9</b>		
Rank	35	55	40	40	40	20	50	45	99		
	DOC	CW	YG	MARB	BF	REA	API	TI			
EPD	<b>12.7</b>	<b>35.1</b>	<b>-0.20</b>	<b>0.55</b>	<b>-0.047</b>	<b>0.60</b>	<b>130.4</b>	<b>86.9</b>			
Rank	45	45	60	25	45	65	60	30			
		BW							ADJ. WW		
		<b>77</b>							<b>680</b>		

A beautiful Jackson son with tremendous muscle and shape. A combination of calving ease and superior phenotype.



DRAKE BULL M6 Sells as Lot 49.

LOT  
**49**

**DRAKE BULL M6**

Hetero Black II Homo Polled  
3/1/2024 M6

**GGP**

PB SM  
ASA# 4419201

HOOK'S FULL FIGURES 11F

**FIVE STAR JACKSON J10**  
KBHR F316

**DRAKE MISS A365K**  
KGH MISS REGARDS 365A

	CE	BW	WW	YW	ADG	MCE	MILK	MWW	STAY		
EPD	<b>12.3</b>	<b>2.1</b>	<b>85.4</b>	<b>130.1</b>	<b>0.28</b>	<b>7.2</b>	<b>30.5</b>	<b>73.1</b>	<b>7.2</b>		
Rank	40	70	25	25	30	30	10	10	99		
	DOC	CW	YG	MARB	BF	REA	API	TI			
EPD	<b>15.3</b>	<b>41.5</b>	<b>-0.40</b>	<b>0.34</b>	<b>-0.058</b>	<b>1.20</b>	<b>128.4</b>	<b>88.7</b>			
Rank	15	15	50	25	85	5	60	25			
		BW							ADJ. WW		
									<b>785</b>		

An outstanding "Jackson" son with nine of his EPDs in the top 25%. Excellent performance with a WW of 785 lbs and YW of 1395 lbs.







### TJ WAR PAINT 759J

No baldie bull, we have ever used has added as much performance, mass, and stoutness to a set of calves like War Paint does. The War Paint sire group gets better and better with every passing day and these baldie bulls offer striking balance with extra fleshing ability and mass. We feel they represent the cattleman's kind.

TJ WAR PAINT 759J Sire of Lots 50-53.

50	<b>LOT</b>		<b>DRAKE BULL D765M</b>		<b>GGP</b>				
	Homo Black II Homo Polled		5/8 SM 3/8 AN						
1/31/2024		K765M		ASA# 4419189					
TJ CHIEF 460G			TJ BONAFIDE 647H						
<b>TJ WAR PAINT 759J</b>			<b>DRAKE MISS D765K</b>						
TJ 2D			DRAKE MISS T765D						
EPD	CE	BW	WW	YW	ADG	MCE	MILK	MWW	STAY
Rank	9.3	3.2	102.9	158.8	0.35	4.9	33.6	85.0	12.3
	90	95	1	2	10	85	3	1	75
EPD	DOC	CW	YG	MARB	BF	REA	API	TI	
Rank	13.3	58.4	-0.06	0.43	-0.019	0.67	131.3	94.2	
	40	4	90	40	85	55	55	10	
		BW		ADJ. WW					
		85		759					

A "War Paint" son with performance and great WW and YW EPDs. His WW was 759 lbs with a gain of 4.61 lbs/day for a projected YW of 1489 lbs. EPDs for WW Top 1%, YW Top 2%, and MWW Top 1%.



DRAKE BULL D765M Sells as Lot 50.

51	<b>LOT</b>		<b>IRON CREEK G959M</b>						
	Homo Black II Homo Polled		1/2 SM 1/2 AN						
2/25/2024		G959M		ASA# 4445833					
TJ CHIEF 460G			CCR COWBOY CUT 5048Z						
<b>TJ WAR PAINT 759J</b>			<b>TJ 959G</b>						
TJ 2D			TJ MISS FINAL ANSWER A5						
EPD	CE	BW	WW	YW	ADG	MCE	MILK	MWW	STAY
Rank	10.3	0.7	87.2	129.2	0.26	6.5	31.4	75.1	19.6
	80	65	15	30	55	60	10	5	10
EPD	DOC	CW	YG	MARB	BF	REA	API	TI	
Rank	13.4	40.5	0.01	0.51	-0.002	0.37	148.3	88.9	
	40	30	99	30	90	95	30	25	
		BW		ADJ. WW					
		77		612					

A War Paint son with a great look and top 10% milk, 5% maternal weaning weight and 10% stay. If you keep your replacement females from your own herd, 959M will improve those heifers.



IRON CREEK G959M Sells as Lot 51.





DRAKE GENESIS M3 Sells as Lot 53.



LOT	<b>DRAKE GENESIS M3</b>		<b>GGP</b>						
<b>53</b>	Homo Black II Homo Polled		3/4 SM 1/4 AN						
	1/4/2024	M3	ASA# 4427074						
	WS PROCLAMATION E202		DRAKE IN COMMAND						
	<b>LBRS GENESIS G69</b>		<b>DRAKE BLOG X3</b>						
	LBR DIANA D69		618_						
	CE	BW	WW	YW	ADG	MCE	MILK	MWW	STAY
EPD	<b>10.3</b>	<b>1.8</b>	<b>87.9</b>	<b>137.0</b>	<b>0.31</b>	<b>5.1</b>	<b>22.7</b>	<b>66.5</b>	<b>10.2</b>
Rank	80	85	15	15	25	80	65	30	90
	DOC	CW	YG	MARB	BF	REA	API	TI	
EPD	<b>12.4</b>	<b>55.3</b>	<b>-0.11</b>	<b>0.53</b>	<b>-0.036</b>	<b>0.66</b>	<b>130.8</b>	<b>88.7</b>	
Rank	50	10	85	25	55	55	55	25	
	BW		ADJ. WW						
	<b>85</b>		<b>814</b>						

Packing an 814 lb. weaning weight and a 1480 lb. yearling weight, this is the bull that catches your eye when you walk in the pen. An absolute power bull that is correct in his joint structure with an excellent hoof. You could stand and watch him move around the pen all day and be overwhelmed with his level of physical presence. This is a cattlemen's bull in the in the sense that those who have bred cattle for many years will especially appreciate this one.

### LBRS GENESIS G69

First class growth, payweight and power can be found in a great set of Genesis sons we have to offer in 2025. The bulls are absolute brutes for power and will be certain to add payweight and value to their progeny. If you are looking to market a heavier more valuable set of feeder calves these Genesis sons should do the trick.



LBRS GENESIS G69 Sire of Lots 54-55.



IRON CREEK RISEN 838M Sells as Lot 54.



DRAKE GENESIS M4 Sells as Lot 55.

LOT  
**54**

**IRON CREEK RISEN 838M**

Homo Black II Homo Polled  
1/28/2024 838M

**GGP**

1/2 SM 1/2 AN  
ASA# 4378366

WS PROCLAMATION E202 MILL BRAE IDENTIFIED 4031  
**LBRS GENESIS G69** **PINE VIEW BLACKCAP G076**  
 LBR DIANA D69 MILL BRAE CP BLACKCAP 7139

	CE	BW	WW	YW	ADG	MCE	MILK	MWW	STAY
EPD	11.0	1.0	86.7	138.1	0.32	4.7	26.2	69.3	14.9
Rank	75	70	15	15	20	85	35	20	50
	DOC	CW	YG	MARB	BF	REA	API	TI	
EPD	13.6	60.1	-0.07	1.04	-0.014	0.77	170.6	102.1	
Rank	35	3	90	2	85	35	5	2	
BW					ADJ. WW				
<b>73</b>									

Risen is out of the same Angus donor as the Nothing Ventured bull and is sired by Genesis. He is top 15-20% for growth traits, 3% carcass weight, 2% marbling with a 171 API and a top 2% 102 Terminal Index. Gained 4.7 pounds for a 1446 pound yearling weight.



LOT  
**55**

**DRAKE GENESIS M4**

Homo Black II Homo Polled  
1/2/2024 M4

**GGP**

PB SM  
ASA# 4427075

WS PROCLAMATION E202 TJ PLATTE RIVER 370D  
**LBRS GENESIS G69** **DRAKE RIVER LADY H4**  
 LBR DIANA D69 DRAKE COWBOY LADY F103

	CE	BW	WW	YW	ADG	MCE	MILK	MWW	STAY
EPD	11.4	2.4	94.5	139.7	0.28	5.4	23.5	70.7	16.9
Rank	55	75	10	15	30	60	50	15	35
	DOC	CW	YG	MARB	BF	REA	API	TI	
EPD	15.5	33.6	-0.05	0.73	0.003	0.50	168.2	100.8	
Rank	15	30	99	2	99	99	10	3	
BW					ADJ. WW				
<b>86</b>					<b>795</b>				

M4 is a stunning beast in terms of length of body, length of front and phenotypic excellence from front to back. Posting a 795 lb. weaning weight and a 1344 lb. yearling weight, this is growth machine with a very well-balanced set of numbers and a top 10% API. M4 will add correctness and look that is probably unparalleled in a bull of his growth and EPDs.





TJ BONAFIDE 647H Sire of Lots 56-59.

### TJ BONAFIDE 647H

Larry's \$16,000 selection from Triangle J Ranch in Nebraska. This Eagle son mirrors his sire's broad-based excellence and adds more growth than Eagle along with outstanding maternal traits. He personifies our belief that great bulls will make both outstanding herd sires and outstanding replacement females.

LOT **56** **DRAKE BULL A365M** **GGP**  
 Hetero Black II Homo Polled 3/4 SM 1/4 AN  
 2/28/2024 A365M ASA# 4419186

HOOK'S EAGLE 6E YARDLEY HIGH REGARD W242  
**TJ BONAFIDE 647H** **KGH MISS REGARDS 365A**  
 TJ 23D KGH ANGIE 612S

	CE	BW	WW	YW	ADG	MCE	MILK	MWW	STAY
EPD	10.7	2.8	86.6	140.8	0.34	3.6	30.1	73.3	15.6
Rank	75	95	20	15	10	95	10	10	40
	DOC	CW	YG	MARB	BF	REA	API	TI	
EPD	13.7	40.9	-0.29	0.20	-0.058	0.85	124.0	80.5	
Rank	35	30	30	80	30	25	70	55	
	BW				ADJ. WW				
	<b>80</b>				<b>852</b>				

Our top weaning weight bull.. 852 lbs. Off his dam with no creep! A performance bull with EPDs- Top WW 20%, 15% YW, Top 10% ADG. It all adds up to pounds and he looks great! WW 852 lbs, YW 1410



DRAKE BULL A365M Sells as Lot 56.

LOT **57** **DRAKE BULL G27M** **GGP**  
 Homo Black II Homo Polled 5/8 SM 3/8 AN  
 2/20/2024 G27M ASA# 4419197

HOOK'S EAGLE 6E TJ FRESH START 485D  
**TJ BONAFIDE 647H** **TJ 27G**  
 TJ 23D TJ 2D

	CE	BW	WW	YW	ADG	MCE	MILK	MWW	STAY
EPD	12.8	-2.4	82.0	131.4	0.31	6.5	32.8	73.7	19.2
Rank	50	15	30	25	25	60	3	10	10
	DOC	CW	YG	MARB	BF	REA	API	TI	
EPD	14.7	31.3	-0.10	0.37	-0.007	0.54	149.3	87.7	
Rank	25	55	85	50	90	75	25	30	
	BW				ADJ. WW				
	<b>79</b>				<b>615</b>				

A top "Bonafide" son with balanced EPD numbers. 10 numbers in the top 30%. High performance maternal, good disposition and easy on the eyes with a WW of 615 lbs. He had an ADG of 4.68 lbs/day and will have an projected YW of 1359 lbs.



DRAKE BULL G27M Sells as Lot 57.



DRAKE BULL G202M Sells as Lot 58.

LOT **58** **DRAKE BULL G202M** **GGP**

Homo Black II Homo Polled 3/4 SM 1/4 AN  
 2/20/2024 G202M ASA# 4419193

HOOK'S EAGLE 6E TJ PLATTE RIVER 370D  
**TJ BONAFIDE 647H** **DRAKE MISS B202G**  
 TJ 23D DRAKE MISSN202B

	CE	BW	WW	YW	ADG	MCE	MILK	MWW	STAY
EPD	11.6	1.2	99.8	145.0	0.28	4.4	24.6	74.4	13.7
Rank	65	75	2	10	40	90	45	10	65
	DOC	CW	YG	MARB	BF	REA	API	TI	
EPD	17.7	36.3	-0.36	0.22	-0.087	0.80	128.1	89.9	
Rank	5	40	15	75	4	30	60	20	
	BW				ADJ. WW				
	<b>83</b>				<b>715</b>				

If you want a top WW and YW- heres the bull for you! EPDs show WW Top 2%, YW Top 10%. The Bonafide x Platte River works every time.



HARLAN BULL A106M Sells as Lot 59.

LOT **59** **HARLAN BULL A106M** **GGP**

Homo Black II Homo Polled 5/8 SM 3/8 AN  
 2/20/2024 A106M ASA# 4420714

HOOK'S EAGLE 6E SS SLEEP TIGHT 69U  
**TJ BONAFIDE 647H** **HARLAN HIDDEN TRUTH**  
 TJ 23D DRAKE MISS 106U

	CE	BW	WW	YW	ADG	MCE	MILK	MWW	STAY
EPD	12.6	0.4	87.6	137.7	0.31	3.9	24.0	67.8	11.6
Rank	50	60	15	15	25	95	50	25	80
	DOC	CW	YG	MARB	BF	REA	API	TI	
EPD	13.9	37.7	-0.32	0.27	-0.059	0.90	126.3	85.3	
Rank	30	35	25	70	30	20	65	35	
	BW				ADJ. WW				
	<b>79</b>				<b>742</b>				

A Bonafide son that is in the top 15% for both WW and YW. The proof is there too with a ADG of 5.1 lbs a day



## Trucking Options

REB Transportation  
 Rob Beeler  
 (515) 360-1764

Tru Time Logistics  
 Evan Bixby  
 (319) 559-0167  
 evan@trutimelogistics.com



LOT **60** **DRAKE BULL H124M** **GGP**

Hetero Black II Homo Polled 5/8 SM 3/8 AN  
3/13/2024 H124M ASA# 4419198

TUEL COWMAKER A3032 WS ALL ABOARD B80  
**BSUM MOST WANTED 117J** **DRAKE MISS F124H**  
X/L MS 9103G DRAKE MISS C124F

	CE	BW	WW	YW	ADG	MCE	MILK	MWW	STAY
EPD	16.7	-1.0	79.8	120.9	0.26	8.7	25.9	65.8	7.7
Rank	15	35	35	45	55	25	35	35	99
	DOC	CW	YG	MARB	BF	REA	API	TI	
EPD	13.5	36.2	-0.26	0.43	-0.052	0.76	130.3	86.2	
Rank	35	40	40	40	30	40	60	35	
	BW				ADJ. WW				
	79				793				

You will love the look of this guy. Sired by "BSSUM Most Wanted." The top selling bull from the Black Summit sale. We like his kind as they are soft made, easy keeping, and high performing. H124M has a WW of 793 lbs and YW of 1380 lbs.



DRAKE BULL H124M Sells as Lot 60.

LOT **61** **DRAKE BULL H49M** **GGP**

Hetero Black II Homo Polled 3/4 SM 1/4 AN  
3/5/2024 H49M ASA# 4419183

TUEL COWMAKER A3032 DRAKE HIGH RIVER  
**BSUM MOST WANTED 117J** **DRAKE MISS A49H**  
X/L MS 9103G HL MS SUPERMAN A49

	CE	BW	WW	YW	ADG	MCE	MILK	MWW	STAY
EPD	14.4	-1.9	76.9	109.6	0.20	7.1	27.1	65.5	12.6
Rank	30	20	45	70	90	50	25	35	75
	DOC	CW	YG	MARB	BF	REA	API	TI	
EPD	14.2	24.2	-0.37	0.14	-0.067	0.81	120.9	78.2	
Rank	30	80	15	90	20	30	75	65	
	BW				ADJ. WW				
	83				729				

The easy keeping kind with a good CE- Top 30%, and BW Top 20%. He had a WW of 729, YW 1305 lbs.



DRAKE BULL H49M Sells as Lot 61.

LOT **62** **DRAKE BULL A75M** **GGP**

Homo Black II Homo Polled 3/4 SM 1/4 AN  
3/20/2024 A75M ASA# 4419178

TUEL COWMAKER A3032 ELM-MOUND/GS STANDSALONE  
**BSUM MOST WANTED 117J** **DRAKE GLORIA X75A**  
X/L MS 9103G LLSF GLORY GIRL TOO X75

	CE	BW	WW	YW	ADG	MCE	MILK	MWW	STAY
EPD	14.1	0.2	79.5	112.9	0.21	6.0	20.9	60.7	14.5
Rank	35	55	40	60	85	65	75	60	55
	DOC	CW	YG	MARB	BF	REA	API	TI	
EPD	13.7	16.6	-0.29	0.25	-0.059	0.56	127.2	79.0	
Rank	35	95	30	70	30	75	65	60	
	BW				ADJ. WW				
	83				724				

You will like the looks and style of this guy. A complete all purpose black white face bull from a great cow family. WW 724 with a gain of 3.96 lbs/day- projected YW 1358.



DRAKE BULL A75M Sells as Lot 62.



IRON CREEK GENERAL 773L Sells as Lot 63.

**LOT 63** **IRON CREEK GENERAL 773L** **GGP**

Homo Black II Homo Polled 3/4 SM 1/4 AN  
 9/1/2023 773L ASA# 4341404

HOOK'S BEACON 56B HOOK'S EAGLE 6E  
**CLRS GUARDIAN 317G** **TJ 773G**  
 CLRS ALWAYS XCELLENT TJ 50D

	CE	BW	WW	YW	ADG	MCE	MILK	MWW	STAY
EPD	15.7	-2.1	94.4	150.3	0.35	6.9	23.9	71.0	18.2
Rank	20	20	5	5	10	50	50	15	15

	DOC	CW	YG	MARB	BF	REA	API	TI
EPD	7.4	56.4	-0.18	0.72	-0.010	1.09	175.0	103.4
Rank	95	5	65	10	90	4	4	2

BW 77 ADJ. WW

Growth and carcass at an elite level. General is out of one of our very best Eagle donors and sired by the elite numbered Guardian. Note his top 20% calving ease is complemented by his top 5% growth traits, 5% carcass weight, 4% ribeye area and 10% marbling-with a top 4% API and 2% TI! An outstanding commercial bull. **GAINED 5.4 POUNDS PER DAY FOR A 1455 POUND YEARLING WEIGHT!**



DRAKE BULL K104M Sells as Lot 64.

**LOT 64** **DRAKE BULL K104M** **GGP**

Homo Black II Homo Polled 3/4 SM 1/4 AN  
 2/9/2024 K104M ASA# 4419179

TJ CHIEF 460G CLRS GUARDIAN 317G  
**TJ WAR PAINT 759J** **DRAKE MISS H104K**  
 TJ 2D DRAKE MISS D104H

	CE	BW	WW	YW	ADG	MCE	MILK	MWW	STAY
EPD	9.0	3.3	95.7	143.3	0.30	4.3	28.3	76.1	19.2
Rank	90	95	4	10	30	90	20	4	10

	DOC	CW	YG	MARB	BF	REA	API	TI
EPD	11.8	66.4	-0.05	0.52	-0.005	0.84	145.7	91.0
Rank	60	2	95	30	90	25	30	20

BW ADJ. WW

A high performance "War Paint" son that will add pounds to a calf crop. EPDs show top 4% WW, top 10% YW, and top 4% MWW. His weaning weight was 686 with a gain of 4.22 lbs/day. His adjusted YW will be 1355 lbs.



HARLAN BULL K76L Sells as Lot 65.

**LOT 65** **HARLAN BULL K76L** **GGP**

Black II Homo Polled PB SM  
 12/26/2023 K76L ASA# 4420709

HHS MR 847D HOOK'S EAGLE 6E  
**KBHR REVOLUTION H071** **HARLAN MS H76K**  
 WS MISS SUGAR C4 HARLAN KAREN D76H

	CE	BW	WW	YW	ADG	MCE	MILK	MWW	STAY
EPD	12.6	3.8	117.8	177.0	0.37	6.4	19.0	77.8	13.9
Rank	35	95	1	1	2	45	85	3	70

	DOC	CW	YG	MARB	BF	REA	API	TI
EPD	18.6	71.6	-0.30	0.53	-0.068	1.19	161.6	109.4
Rank	2	1	85	10	70	5	15	1

BW 94 ADJ. WW 747

This Revolution son is in the top 5% or better in 8 traits. Not to mention he's in the top 1% for both WW and YW.





**LOT 66** **DRAKE BULL G65M** **GGP**

Homo Black II Homo Polled PB SM  
 2/27/2024 G65M ASA# 4419185

HHS MR 847D KOCH BIG TIMBER 685D  
**KBHR REVOLUTION H071** **DRAKE 65G**  
 WS MISS SUGAR C4 TJ 108D

	CE	BW	WW	YW	ADG	MCE	MILK	MWW	STAY
EPD	13.2	-2.8	83.1	118.1	0.22	7.2	21.3	62.8	17.8
Rank	30	3	30	45	70	30	65	50	25
	DOC	CW	YG	MARB	BF	REA	API	TI	
EPD	14.2	32.0	-0.17	0.33	-0.017	0.70	155.1	90.5	
Rank	25	35	99	25	99	85	20	20	
BW					ADJ. WW				
<b>84</b>					<b>795</b>				



DRAKE BULL G65M Sells as Lot 66.

A Revolution son out of a cow we consider one of our best. Good numbers across the board and he sure has the look. WW 795 lbs and a YW of 1331 lbs.



**LOT 67** **DRAKE BULL K34M** **GGP**

Homo Black II Homo Polled PB SM  
 2/8/2024 K34M ASA# 4419182

HHS MR 847D CCR SPEAK NOW 6178G  
**KBHR REVOLUTION H071** **DRAKE MISS F34K**  
 WS MISS SUGAR C4 DRAKE MISS D34F

	CE	BW	WW	YW	ADG	MCE	MILK	MWW	STAY
EPD	10.9	3.4	105.0	169.6	0.40	5.5	17.8	70.2	19.2
Rank	60	90	1	1	1	60	90	20	15
	DOC	CW	YG	MARB	BF	REA	API	TI	
EPD	16.8	54.2	-0.28	0.20	-0.060	0.97	149.6	94.1	
Rank	10	2	90	45	85	30	25	10	
BW					ADJ. WW				
<b>84</b>					<b>713</b>				



DRAKE BULL K34M Sells as Lot 67.

A powerful son of "Revolution" out of a first calf heifer. Have a look at these numbers. EPDs: WW 105- Top 1%, YW 169.6- Top 1%, ADG 4 Top 1%. He weaned off his first calf dam at 713 lbs. with no creep. He gained 5.22 lbs/day with a 1543 lb. YW. A BWF bull with a load of potential.



**LOT 68** **HARLAN BULL F24M** **GGP**

Homo Black II Homo Polled 3/4 SM 1/4 AN  
 2/7/2024 F24M ASA# 4420711

LLSF VANTAGE POINT F398 TJ Z54  
**CLRWR CLEAR ADVANTAGE H4G** **HARLAN MISS D24F**  
 WS MISS SUGAR C4 DRAKE MISS A24D

	CE	BW	WW	YW	ADG	MCE	MILK	MWW	STAY
EPD	16.6	-5.3	66.2	89.0	0.14	8.9	24.3	57.3	16.8
Rank	15	2	85	95	99	20	50	75	30
	DOC	CW	YG	MARB	BF	REA	API	TI	
EPD	15.6	0.4	-0.24	0.42	-0.036	0.37	147.7	81.8	
Rank	15	99	45	45	55	95	30	50	
BW					ADJ. WW				
<b>82</b>					<b>600</b>				



HARLAN BULL F24M Sells as Lot 68.

A true heifer bull that not only shows it in his EPDs but also the only bull in the sale to earn the right choice Accredited Calving Ease logo.





DRAKE WOODY Sells as Lot 69.

**LOT 69 DRAKE WOODY** **GGP**

Hetero Black II Homo Polled PB SM  
 2/7/2024 M10 ASA# 4396170

W/C LOADED UP 1119Y DRAKE DOWN N DIRTY  
**GEFF COUNTY 0** **DRAKE DIRTY LADY J58**  
 RUBY NFF RHYTHM 475B DRAKE COMMAND LADY B58

	CE	BW	WW	YW	ADG	MCE	MILK	MWW	STAY
EPD	10.3	2.1	69.1	106.0	0.23	5.7	16.8	51.2	10.6
Rank	70	70	85	75	65	55	95	95	95
	DOC	CW	YG	MARB	BF	REA	API	TI	
EPD	6.3	20.6	-0.43	0.28	-0.079	0.86	122.7	75.7	
Rank	95	80	35	30	50	55	70	70	
BW					ADJ. WW				
<b>87</b>					<b>762</b>				

This is a bull we had at the Iowa State Fair that stood 2nd in a stout class of bulls and was much admired for his power and performance combined with a near flawless phenotype. Great fronted with a powerful hip. One of the top yearling weights at 1462 pounds.



DRAKE BULL A05M Sells as Lot 70.

**LOT 70 DRAKE BULL A05M** **GGP**

Homo Black II Homo Polled 3/4 SM 1/4 AN  
 2/24/2024 A05M ASA# 4419196

W/C FORT KNOX 609F S A V FINAL ANSWER 0035  
**IRON CREEK SUNDAY SILENCE 50K** **SFS ROSALIE XA05**  
 WS MISS SUGAR C4 SFS ROSALIE Y31

	CE	BW	WW	YW	ADG	MCE	MILK	MWW	STAY
EPD	13.0	-1.3	76.5	107.6	0.19	7.6	29.1	67.3	15.4
Rank	45	30	50	70	95	40	15	25	45
	DOC	CW	YG	MARB	BF	REA	API	TI	
EPD	11.6	31.8	-0.16	0.51	-0.014	0.68	142.3	85.3	
Rank	65	55	70	30	85	50	40	35	
BW					ADJ. WW				
<b>81</b>					<b>754</b>				

Out of our four Fort Knox x Sugar C4 Bull and a great SAV. Final Answer cow, this guy looks good and should sire some top quality calves.



DRAKE BULL 156M Sells as Lot 71.

**LOT 71 DRAKE BULL 156M** **GGP**

Homo Black II Homo Polled 3/4 SM 1/4 AN  
 3/13/2024 156M ASA# 4419180

W/C FORT KNOX 609F TJ FRANCHISE 451D  
**IRON CREEK SUNDAY SILENCE 50K** **TJ MISS 661F**  
 WS MISS SUGAR C4 TJ 68B

	CE	BW	WW	YW	ADG	MCE	MILK	MWW	STAY
EPD	12.2	0.9	86.2	127.3	0.26	4.8	21.9	64.9	13.0
Rank	60	70	20	30	55	85	70	40	70
	DOC	CW	YG	MARB	BF	REA	API	TI	
EPD	16.6	46.2	-0.10	0.50	-0.010	0.71	136.3	87.4	
Rank	10	20	85	30	90	45	50	30	
BW					ADJ. WW				
<b>79</b>					<b>656</b>				

Sired by our Fort Knox x Sugar bull that makes them fancy with good performance. Gained 4 lbs/day. YW 1292 lbs.



**LOT 72 HARLAN BULL J26M** **GGP**

Homo Black II Homo Polled 1/2 SM 1/2 AN  
 2/6/2024 J26M ASA# 4420715

POSS MAVERICK TJ ROUGH COUNTRY 219G  
**POSS DEADWOOD** **HARLAN FANCY LIKE G26J**  
 POSS ELLUNAMERE 399 HARLAN COW D26G

	CE	BW	WW	YW	ADG	MCE	MILK	MWW	STAY
EPD	11.3	1.3	81.4	136.8	0.35	5.5	26.6	67.4	15.9
Rank	70	75	30	20	10	75	30	25	40

	DOC	CW	YG	MARB	BF	REA	API	TI
EPD	12.4	41.9	0.03	0.95	0.000	0.32	165.7	96.2
Rank	50	25	99	2	95	99	10	10

**BW** **ADJ. WW**  
**87** **678**

A half-blood Deadwood son with a balanced set of EPDs putting both his API and TI in the top 10%.



HARLAN BULL J26M Sells as Lot 72.



IRON CREEK NOTHING VENTURED Sells as Lot 73.

**LOT 73 IRON CREEK NOTHING VENTURED**

Homo Black II Homo Polled PB Angus  
 08-25-2022 76K AAA# \*20711202

POSS MAVERICK MILL BRAE IDENTIFIED 4031  
**POSS DEADWOOD** **PINE VIEW BLACKCAP G076**  
 POSS ELLUNAMERE 399 MILL BRAE CP BLACKCAP 7139

	CED	BW	WW	YW	CEM	MILK	DOC
EPD	+3	+2.2	+83	+143	+5	+25	+32
Rank	75	70	15	15	80	55	3

	CW	MARB	RE	FAT	SM	\$W	\$B	\$C
EPD	+75	+1.79	+63	-.015	+88	+77	+247	+408
Rank	10	2	60	20	10	15	1	1

A truly unique opportunity to purchase an elite Angus bull-Nothing Ventured is a Poss Deadwood son out of our Pine View Blackcap G076 (Mill Brae Identified) donor. A 412 \$C (elite top 1%), 249 \$B with top 5% \$M. Nothing Ventured is in the top 4% of the Angus breed for both Average Daily Gain and DMI- a rare high growth bull with super feed efficiency. All of this comes with top 10% Heifer Pregnancy, top 2% docility and Mature Height at 40%. Nothing Ventured excels at growth, carcass and maternal traits!

If you want to breed crossbreds look at his numbers in the Simmental data base – there Nothing Ventured is in the top 5% for WW and YW, top 1% docility, carcass weight, marbling, API (199!) and TI- an astronomical 117 TI. Moderate framed, powerful and attractive looks with breed leading genomically enhanced EPDs- Nothing Ventured personifies Iron Creek's Elite Balance Bull program. We reserve the right to collect, at our cost, 50 units of semen for in-herd and embryo transplant work.

# The Bred Heifers.



IRON CREEK 38W 26K Sells as Lot 75.



TJ MS 38W Dam of Lot 75.

**LOT 75**

**IRON CREEK 38W 26K**

Black // Homo Polled PB SM  
 9/11/2022 26K ASA# 4249574

W/C BANKROLL 811D DIKEMANS SURE BET  
**W/C FORT KNOX 609F** **TJ MS 38W**  
 K-LER DOLLY'S QUEEN 609D TJ 12L

	CE	BW	WW	YW	ADG	MCE	MILK	MWW	STAY
EPD	<b>14.2</b>	<b>-0.2</b>	<b>68.2</b>	<b>109.1</b>	<b>0.26</b>	<b>6.3</b>	<b>31.8</b>	<b>65.8</b>	<b>16.7</b>
Rank	20	25	90	70	40	45	4	35	40
	DOC	CW	YG	MARB	BF	REA	API	TI	
EPD	<b>15.7</b>	<b>20.0</b>	<b>-0.31</b>	<b>0.29</b>	<b>-0.052</b>	<b>0.69</b>	<b>144.8</b>	<b>80.2</b>	
Rank	10	80	85	30	85	90	30	50	

Est. Calf EPDs

CE	BW	WW	YW	MCE	MILK	MWW	STAY	DOC	CW	YG	MARB	REA	SAPI	STI
14.9	-1.1	76.6	121.9	8.2	31.5	69.7	18.7	16.7	33.2	-0.31	0.62	0.80	172.2	93.8

*Bred to HA Knockout (4040478). Confirmed safe and due 2/6. Confirmed bull calf.*  
 A rare opportunity to purchase a direct daughter of the famous TJ Ms. 38 W cow owned by our friend Kevin Stephens. Sired by the attractive Fort Knox bull this heifer is in the top 20% for calving ease, 3% milk and has a 144 API. The Planned Mating indicates her bull calf will have a top 5% API of over 171.

One of the best numbered females we have ever offered for sale. Sired by the \$100,000 Guardian and out of a full sister to the 50K stud bull, 05K is an elite balance female-top 20% calving ease, 10% weaning, yearling weight and maternal weaning weight, top 1% Stay, 15% marbling with a top 3% API of 178 and 5% Terminal Index. She is a full sister to our donor Moxie and has the same genetic power. Her bull calf by Knockout will have the kind of numbers that bring a lot of money at bull sales- top 10% weaning weight, 15% yearling weight, 1% Stay, 15% marbling, 1% API of 188 and 2% TI of 103!! A donor quality female carrying a seedstock breeding bull.



IRON CREEK DRAKE 05K Sells as Lot 76.



TJ 20H Dam of Lot 76.

**LOT 76** **IRON CREEK DRAKE 05K**  
 Homo Black II Homo Polled PB SM  
 8/7/2022 05K ASA# 4249584

HOOK'S BEACON 56B TJ TEARDROP 783F  
**CLRS GUARDIAN 317G** TJ 20H  
 CLRS ALWAYS XCELLENT TJ 92C

	CE	BW	WW	YW	ADG	MCE	MILK	MWW	STAY
EPD	13.8	-0.2	94.8	145.0	0.31	6.5	26.6	74.0	25.1
Rank	20	25	10	10	15	40	25	10	1
	DOC	CW	YG	MARB	BF	REA	API	TI	
EPD	6.8	31.1	-0.20	0.43	-0.030	0.69	178.0	98.4	
Rank	95	40	99	15	99	90	3	5	

Est. Calf EPDs

CE	BW	WW	YW	MCE	MILK	MWW	STAY	DOC	CW	YG	MARB	REA	\$API	\$TI
14.7	-1.1	89.9	139.9	8.3	28.9	73.8	22.9	12.3	38.7	-0.26	0.69	0.80	189.3	103.1

Bred to HA Knockout (4040478). Confirmed safe and due 2/6. Confirmed bull calf.

**LOT 77** **DRAKE MISS D185L**  
 Black II Polled PB SM  
 3/11/2023 D185L ASA# 4450605

KBHR HIGH ROAD E283 REMINGTON LOCK N LOAD54U  
**KBHR BACKROADS G014** **DRAKE MISS RA185D**  
 KBHR B120 DRAKE MISS R185A

	CE	BW	WW	YW	ADG	MCE	MILK	MWW	STAY
EPD	12.9	0.9	71.7	109.5	0.24	6.1	17.6	53.4	18.5
Rank	30	45	75	65	55	50	90	90	20
	DOC	CW	YG	MARB	BF	REA	API	TI	
EPD	14.7	25.5	-0.34	0.23	-0.064	0.78	142.1	77.7	
Rank	20	60	75	40	70	70	35	60	

Est. Calf EPDs

CE	BW	WW	YW	MCE	MILK	MWW	STAY	DOC	CW	YG	MARB	REA	\$API	\$TI
15.7	-0.3	79.6	122.8	9.1	25.2	64.9	15.2	15.3	30.4	-0.31	0.51	0.85	159.7	91.3

Bred to Five Star Jackson (3947790). Confirmed safe and due 2/22. Confirmed heifer calf.



DRAKE MISS D185L Sells as Lot 77.

A beautiful female by Back Roads out of a Lock n' Load dam bred to Five Star Jackson. Her heifer calf by Jackson will be exciting.



Five Star Jackson Service Sire of Lot 77.

Do NOT miss this female. Her pedigree is deep with outstanding females, going back to the 306R and 8E donors at Triangle J, and her dam is by the incomparable female producer, Hook's Eagle. Her direct sire is the new female maker-Five Star Jackson. She is in the top 5% for CE while being in the top 20% for growth, 5% marbling, 15% ribeye, 10% API and 5% TI. Her Limitless heifer calf will be an outstanding producer and will, without a doubt, be a show stopper for looks!



IRON CREEK H349L Sells as Lot 78.

**LOT 78 IRON CREEK H349L**  
 Black II Homo Polled PB SM  
 2/19/2023 H349L ASA# 4458488

HOOK'S FULL FIGURES 11F HOOK'S EAGLE 6E  
**FIVE STAR JACKSON J10** TJ 349H  
 KBHR F316 TJ 8E

CE	BW	WW	YW	ADG	MCE	MILK	MWW	STAY
16.5	-0.9	87.4	134.1	0.29	9.3	25.9	69.5	14.6
5	15	20	20	25	10	30	20	65
DOC	CW	YG	MARB	BF	REA	API	TI	
16.5	37.6	-0.34	0.60	-0.050	1.04	169.0	99.9	
10	20	75	5	95	20	10	4	

Est. Calf EPDs

CE	BW	WW	YW	MCE	MILK	MWW	STAY	DOC	CW	YG	MARB	REA	\$API	\$TI
17.8	-1.6	87.9	135.8	9.5	26.3	70.2	14.3	14.9	40.7	-0.27	0.68	0.90	175.0	102.1

Bred to ES Five Star Limitless (4186927). Confirmed safe and due 2/6. Confirmed heifer calf.

**LOT 79 IC/AGR ROAD SHOW 1281K**  
 Homo Black II Homo Polled 1/2 SM 1/2 AN  
 10/8/2022 1281K ASA# 4124927

HOOK'S BEACON 56B G A R HOMETOWN  
**KBHR HIGH ROAD E283** VINTAGE BLACKCAP 1281  
 WS MISS SUGAR C4 VINTAGE BLACKCAP 6018

CE	BW	WW	YW	ADG	MCE	MILK	MWW	STAY
13.5	-0.6	97.6	163.3	0.41	7.9	24.2	73.1	15.8
40	40	3	1	1	35	50	10	40
DOC	CW	YG	MARB	BF	REA	API	TI	
15.3	66.0	-0.17	0.75	-0.030	1.01	169.1	104.6	
20	2	70	10	70	10	10	1	

Est. Calf EPDs

CE	BW	WW	YW	MCE	MILK	MWW	STAY	DOC	CW	YG	MARB	REA	\$API	\$TI
15.0	-0.6	91.6	151.1	9.0	24.9	70.7	14.9	16.1	53.9	-0.21	0.52	0.94	159.6	96.9

Bred to CCR Speak Now (3703453). Confirmed safe and due 4/7.



IC/AGR ROAD SHOW 1281K Sells as Lot 79.

If you are raising bulls-or want to- please study Road Show. This female came to us in a unique way. Genex bred an Angus donor to High Road in an effort to produce stud bulls. This one pregnancy was a female-and they didn't need any females. Therefore we purchased the pregnant donor with All Beef and Road Show is the result! In order to wrap up the partnership we decided to offer her as a feature bred at our sale. NOTE SHE IS TOP 3% WEANING WEIGHT AND 1% YEARLING WEIGHT AND AVERAGE DAILY GAIN! She is also top 1% carcass weight, marbling and ribeye area with a 170 API and a top 1% Terminal Index.

All Beef and Iron Creek reserve the right to one flush, at our expense, with at least 6 transferable embryos.

**LOT 80** **IRON CREEK G22L**  
 Black II Polled 3/4 SM 1/4 AN  
 2/20/2023 G22L ASA# 4458489

HOOK'S FULL FIGURES 11F HOOK'S EAGLE 6E  
**FIVE STAR JACKSON J10** **IRON CREEK E22G**  
 KBHR F316 IRON CREEK C22E

EPD	CE	BW	WW	YW	ADG	MCE	MILK	MWW	STAY						
Rank	20	35	10	15	25	25	10	5	70						
EPD	DOC	CW	YG	MARB	BF	REA	API	TI							
Rank	15	25	50	20	70	15	20	5							
Est. Calf EPDs	CE	BW	WW	YW	MCE	MILK	MWW	STAY	DOC	CW	YG	MARB	REA	SAPI	STI
	17.4	-1.7	89.1	138.6	9.3	28.4	72.9	13.4	14.7	43.1	-0.22	0.68	0.85	170.6	101.8

Bred to ES Five Star Limitless (4186927). Confirmed safe and due 2/6. Confirmed heifer calf.  
 Another opportunity for a great breeding female-this Five Star Jackson daughter is out of an Eagle mother and is in the top 20% for calving ease, 15% for growth with a 155 API and top 5% TI! Her Limitless heifer will be an attractive, productive mother cow.



IRON CREEK G22L Sells as Lot 80.

**LOT 81** **DRAKE MISS G30L**  
 Black II Polled 5/8 SM 3/8 AN  
 2/6/2023 G30L ASA# 4453558

WS PROCLAMATION E202 HOOK'S EAGLE 6E  
**CCR SPEAK NOW 6178G** **DRAKE MISS E30G**  
 CCR MS 2138 BOLDR 6028D DRAKE MISS NU30E

EPD	CE	BW	WW	YW	ADG	MCE	MILK	MWW	STAY						
Rank	25	35	25	25	25	40	55	40	60						
EPD	DOC	CW	YG	MARB	BF	REA	API	TI							
Rank	15	35	35	60	45	20	45	35							
Est. Calf EPDs	CE	BW	WW	YW	MCE	MILK	MWW	STAY	DOC	CW	YG	MARB	REA	SAPI	STI
	16.6	-1.1	85.2	134.3	9.9	28.1	70.5	12.9	15.8	36.9	-0.28	0.56	0.91	162.6	97.2

Bred to Five Star Jackson (3947790). Confirmed safe and due 2/23. Confirmed bull calf.



DRAKE MISS G30L Sells as Lot 81.

**LOT 82** **DRAKE MISS 33L**  
 Black II Polled 3/4 SM 1/4 AN  
 4/20/2023 33L ASA# 4453555

WS PROCLAMATION E202 ELM-MOUND/GS STANDSALONE  
**CCR SPEAK NOW 6178G** **DRAKE SWEET PEA**  
 CCR MS 2138 BOLDR 6028D JS DOLLY 33X

EPD	CE	BW	WW	YW	ADG	MCE	MILK	MWW	STAY						
Rank	30	45	75	70	60	30	40	60	70						
EPD	DOC	CW	YG	MARB	BF	REA	API	TI							
Rank	25	75	35	90	45	50	80	85							
Est. Calf EPDs	CE	BW	WW	YW	MCE	MILK	MWW	STAY	DOC	CW	YG	MARB	REA	SAPI	STI
	15.0	-1.1	86.2	141.6	8.5	29.4	72.4	14.7	16.7	43.5	-0.29	0.29	1.12	151.4	91.6

Bred to Gibbs Essential (3716905). Confirmed safe and due 2/22. Confirmed bull calf.



CCR SPEAK NOW 6178G Sire of Lot 82.



DRAKE MISS ZB185L Sells as Lot 83.

LOT **83** **DRAKE MISS ZB185L**  
 Black // Polled 3/4 SM 1/4 AN  
 2/24/2023 ZB185L ASA# 4453554

HOOK'S FULL FIGURES 11F SANDEEN RAINMAKER 2007  
**FIVE STAR JACKSON J10** **DRAKE MISS Z185B**  
 KBHR F316 DRAKE MISS K185Z

CE	BW	WW	YW	ADG	MCE	MILK	MWW	STAY	
15.0	-0.7	69.5	105.0	0.22	9.4	25.3	60.6	13.2	
Rank	25	35	75	75	80	15	40	60	70
DOC	CW	YG	MARB	BF	REA	API	TI		
12.6	23.9	-0.23	0.52	-0.035	0.63	139.4	81.5		
Rank	50	80	50	30	55	60	40	50	

Est. Calf EPDs

CE	BW	WW	YW	MCE	MILK	MWW	STAY	DOC	CW	YG	MARB	REA	\$API	\$TI
15.3	-1.4	77.2	119.9	9.8	28.3	67.1	16.9	15.2	35.1	-0.27	0.73	0.77	172.4	95.5

Bred to HA Knockout (4040478). Confirmed safe and due 2/22. Confirmed bull calf.



DRAKE MISS F266L Sells as Lot 84.

LOT **84** **DRAKE MISS F266L**  
 Black // Polled PB SM  
 4/10/2023 F266L ASA# 4453559

WS PROCLAMATION E202 TJ PLATTE RIVER 370D  
**CCR SPEAK NOW 6178G** **DRAKE MISS A266F**  
 CCR MS 2138 BOLDR 6028D DRAKE MISS Y266A

CE	BW	WW	YW	ADG	MCE	MILK	MWW	STAY	
14.6	-0.2	80.4	124.6	0.28	8.3	25.0	65.1	15.5	
Rank	15	25	40	35	30	15	35	35	55
DOC	CW	YG	MARB	BF	REA	API	TI		
16.5	36.5	-0.23	0.34	-0.043	0.73	149.4	87.5		
Rank	10	25	99	25	95	80	25	25	

Est. Calf EPDs

CE	BW	WW	YW	MCE	MILK	MWW	STAY	DOC	CW	YG	MARB	REA	\$API	\$TI
15.1	-1.1	82.7	129.7	9.2	28.1	69.4	18.1	17.1	41.4	-0.27	0.64	0.82	174.3	97.4

Bred to HA Knockout (4040478). Confirmed safe and due 2/22. Confirmed heifer calf.

LOT **85** **DRAKE MISS FH75L**  
 Black // Polled PB SM  
 2/11/2023 FH75L ASA# 4453566

HOOK'S FULL FIGURES 11F HOOK'S EAGLE 6E  
**FIVE STAR JACKSON J10** **DRAKE MISS F75H**  
 KBHR F316 DRAKE RIVER QUEEN

CE	BW	WW	YW	ADG	MCE	MILK	MWW	STAY
15.9	-1.3	86.9	135.4	0.30	8.6	25.7	69.1	12.9
Rank	10	15	20	20	15	30	20	80
DOC	CW	YG	MARB	BF	REA	API	TI	
17.0	33.6	-0.26	0.61	-0.036	0.84	165.8	100.0	
Rank	5	30	95	4	99	60	10	4

Est. Calf EPDs

CE	BW	WW	YW	MCE	MILK	MWW	STAY	DOC	CW	YG	MARB	REA	\$API	\$TI
14.3	-0.3	91.0	145.3	7.7	28.3	73.7	15.1	17.1	44.5	-0.14	0.67	0.76	163.9	98.9

Bred to ICD Billy Sunday (4105056). Confirmed safe and due 3/9. Confirmed bull calf.  
 Great Jackson heifer out of an Eagle dam. Top numbers across the board with 11 in the top 20%. The planned mating with Billy Sunday is excellent with WW, YW, ADG, MWW, API and TI all in the top 10%.

LOT **86** **DRAKE MISS G378L**  
 Black // Polled PB SM  
 3/7/2023 G378L ASA# 4453565

WS PROCLAMATION E202 W/C EXECUTIVE ORDER 8543B  
**CCR SPEAK NOW 6178G** **DRAKE MISS D378F**  
 CCR MS 2138 BOLDR 6028D DRAKE MISS X378D

CE	BW	WW	YW	ADG	MCE	MILK	MWW	STAY	
14.8	-1.0	76.2	115.7	0.25	7.9	23.9	61.8	13.5	
Rank	15	15	60	55	50	20	45	50	75
DOC	CW	YG	MARB	BF	REA	API	TI		
14.4	25.7	-0.33	0.15	-0.060	0.77	135.4	81.5		
Rank	20	60	80	55	85	75	45	45	

Est. Calf EPDs

CE	BW	WW	YW	MCE	MILK	MWW	STAY	DOC	CW	YG	MARB	REA	\$API	\$TI
15.0	-0.7	91.2	142.1	7.3	26.6	72.0	13.3	16.5	37.8	-0.32	0.21	0.87	142.4	90.8

Bred to TJ Bonafide (3762668). Confirmed safe and due 3/9. Confirmed heifer calf.



**LOT 87 IRON CREEK Y23L**  
 Black II Polled 5/8 SM 3/8 AN  
 3/22/2023 Y23L ASA# 4260383  
 WS PROCLAMATION E202 S A V BISMARCK 5682  
**CCR SPEAK NOW 6178G MSP/DRAKE TEMPTRESS**  
 CCR MS 2138 BOLDR 6028D SNYDER COME ON OVER

CE	BW	WW	YW	ADG	MCE	MILK	MWW	STAY						
15.2	-0.4	75.0	117.6	0.27	9.3	23.1	60.6	15.2						
EPD Rank	25	45	55	50	20	60	60	45						
DOC	CW	YG	MARB	BF	REA	API	TI							
13.2	33.0	-0.18	0.27	-0.029	0.64	131.9	78.0							
EPD Rank	40	50	65	70	70	60	55	65						
Est. Calf EPDs														
16.8	-0.9	81.3	126.9	10.7	28.0	68.5	13.6	14.6	34.1	-0.23	0.53	0.78	157.4	92.4

Bred to Five Star Jackson (3947790). Confirmed safe and due 2/17.  
 The Speak Now females have been outstanding for us- moderate framed, super docile with a deep rib and nice fronts. And Y23L is out of a cow we purchased from Denny Drake that makes a good one every single time-which is why she is still here at almost 14 years of age. Bred to Jackson with a bull calf.



DRAKE MISS A49L Sells as Lot 89.

**LOT 88 G959L**  
 Homo Black II Homo Polled 5/8 SM 3/8 AN  
 1/24/2023 G959L ASA# 4341402  
 WS PROCLAMATION E202 CCR COWBOY CUT 5048Z  
**CCR SPEAK NOW 6178G TJ 959G**  
 CCR MS 2138 BOLDR 6028D TJ MISS FINAL ANSWER A5

CE	BW	WW	YW	ADG	MCE	MILK	MWW	STAY						
14.4	0.1	87.7	137.0	0.31	9.3	24.6	68.5	16.9						
EPD Rank	30	50	15	15	25	20	45	20	30					
DOC	CW	YG	MARB	BF	REA	API	TI							
15.6	41.8	-0.14	0.37	-0.030	0.62	144.1	87.6							
EPD Rank	15	25	75	50	70	65	35	30						
Est. Calf EPDs														
14.5	-1.1	92.9	144.9	7.0	22.1	68.5	15.8	17.3	42.6	-0.28	0.45	1.00	158.5	96.5

Bred to Hook's Eagle (3253742). Confirmed safe and due 2/4. Confirmed bull calf.  
 Another Speak Now female from an excellent Cowboy Cut/Final Answer cow. This girl is in the top 15% of the breed for weaning weight and 20% yearling weight. Her Eagle bull calf will be in the top 10% for WW and YW, top 30% CE and a top 15% API and 10% TI. An excellent female with a herd bull on the way.



G959L Sells as Lot 88.

**LOT 89 DRAKE MISS A49L**  
 Black II Polled PB SM  
 3/8/2023 A49L ASA# 4453557  
 KBHR HIGH ROAD E283 CJ SUPERMAN 015  
**KBHR BACKROADS G014 HL MS SUPERMAN A49**  
 KBHR B120 KSR 49R

CE	BW	WW	YW	ADG	MCE	MILK	MWW	STAY						
14.4	0.0	67.5	97.3	0.19	7.9	22.1	55.8	20.4						
EPD Rank	15	30	90	90	20	60	80	5						
DOC	CW	YG	MARB	BF	REA	API	TI							
14.3	22.8	-0.31	0.22	-0.063	0.66	145.9	76.1							
EPD Rank	20	70	85	40	70	90	30	70						
Est. Calf EPDs														
16.4	-0.7	77.5	116.7	10.0	27.5	66.1	16.2	15.1	29.0	-0.29	0.50	0.79	161.2	90.3

Bred to Five Star Jackson (3947790). Confirmed safe and due 2/22. Confirmed bull calf.

**LOT 90 DRAKE MISS FH21L**  
 Black II Polled 3/4 SM 1/4 AN  
 4/1/2023 FH21L ASA# 4453563  
 TUEL COWMAKER A3032 HOOK'S BEACON 568  
**BSUM MOST WANTED 117J DRAKE MISS YF21H**  
 X/L MS 9103G DRAKE MISS Y21F

CE	BW	WW	YW	ADG	MCE	MILK	MWW	STAY						
16.8	-1.2	79.1	121.0	0.26	8.8	25.5	65.0	15.5						
EPD Rank	15	30	40	45	55	25	40	35	45					
DOC	CW	YG	MARB	BF	REA	API	TI							
13.6	28.3	-0.29	0.40	-0.044	0.82	145.0	85.5							
EPD Rank	35	65	30	45	45	30	35	35						
Est. Calf EPDs														
16.2	-1.6	82.0	127.9	9.5	28.4	69.3	18.1	15.7	37.3	-0.30	0.67	0.86	178.0	98.5

Bred to HA Knockout (4040478). Confirmed safe and due 2/22. Confirmed bull calf.



**LOT 91** **DRAKE MISS C49L**  
 Black II Polled PB SM  
 3/2/2023 C49L ASA# 4453564

HOOK'S FULL FIGURES 11F GNB SHEAR POWER 81X  
**FIVE STAR JACKSON J10** **DRAKE MISS A49C**  
 KBHR F316 HL MS SUPERMAN A49

	CE	BW	WW	YW	ADG	MCE	MILK	MWW	STAY
EPD	16.0	-0.6	73.4	106.5	0.21	9.9	27.1	63.8	14.8
Rank	10	20	70	75	80	5	20	45	60

	DOC	CW	YG	MARB	BF	REA	API	TI
EPD	13.2	25.4	-0.36	0.42	-0.056	0.91	151.5	86.4
Rank	35	60	65	15	85	45	25	30

Est. Calf EPDs

	CE	BW	WW	YW	MCE	MILK	MWW	STAY	DOC	CW	YG	MARB	REA	\$API	\$TI
	14.4	0.1	84.2	130.9	8.4	29.0	71.1	16.0	15.2	40.4	-0.19	0.58	0.79	158.2	92.6

Bred to ICD Billy Sunday (4105056). Confirmed safe and due 3/20. Confirmed bull calf.

**LOT 92** **DRAKE MISS C364L**  
 Black II Polled PB SM  
 3/9/2023 C364L ASA# 4453568

WS PROCLAMATION E202 SS/PRS TRACKIN TAIL 461A  
**CCR SPEAK NOW 6178G** **DRAKE FRACAS**  
 CCR MS 2138 BOLDR 6028D DRAKE MISS X364Z

	CE	BW	WW	YW	ADG	MCE	MILK	MWW	STAY
EPD	13.7	0.9	80.0	126.6	0.29	7.8	19.6	59.5	13.8
Rank	25	45	45	30	25	20	80	65	70

	DOC	CW	YG	MARB	BF	REA	API	TI
EPD	14.9	34.8	-0.32	0.14	-0.067	0.80	132.8	80.9
Rank	15	30	80	60	70	70	50	50

Est. Calf EPDs

	CE	BW	WW	YW	MCE	MILK	MWW	STAY	DOC	CW	YG	MARB	REA	\$API	\$TI
	13.2	0.9	87.5	140.9	7.3	25.2	68.9	15.5	16.1	45.1	-0.17	0.44	0.74	148.7	89.9

Bred to ICD Billy Sunday (4105056). Confirmed safe and due 4/6.

**LOT 93** **IRON CREEK MS J17L**  
 Black II Polled 1/2 SM 3/8 CS 1/8 AN  
 1/17/2023 J17L ASA# 4341418

HOOK'S FULL FIGURES 11F TJ AMERICAN FORTITUDE 430F  
**FIVE STAR JACKSON J10** **IRON CREEK AMERICAN FORCE C17J**  
 KBHR F316 DFC MISS A17C

	CE	BW	WW	YW	ADG	MCE	MILK	MWW	STAY
EPD	15.1	-0.4	82.8	125.8	0.27	8.9	32.3	73.8	15.4
Rank	25	45	25	35	50	20	4	10	45

	DOC	CW	YG	MARB	BF	REA	API	TI
EPD	14.3	33.5	-0.23	0.53	-0.033	0.76	149.3	90.1
Rank	30	50	50	25	55	40	25	20

Est. Calf EPDs

	CE	BW	WW	YW	MCE	MILK	MWW	STAY	DOC	CW	YG	MARB	REA	\$API	\$TI
	15.3	-1.2	83.9	130.3	9.5	31.8	73.7	18.0	16.0	39.9	-0.27	0.74	0.83	178.9	100.5

Bred to HA Knockout (4040478). Confirmed safe and due 3/13. Confirmed bull calf.

This Five Star Jackson female is very attractive and traces back to American Fortitude, a bull dad purchased from Triangle J that produced deep bodied, excellent footed cattle and that we lost prematurely. Outstanding genetics carrying a Knockout herd bull.



**LOT 94** **DRAKE MISS YH21K**  
 Hetero Black II Polled 3/4 SM 1/4 AN  
 3/10/2022 YH21K ASA# 4340454

RC XCEED 063D WS ALL ABOARD B80  
**TJ HANDYMAN 436G** **DRAKE MISS Y21H**  
 TJ 409E DRAKE MISS W21Y

	CE	BW	WW	YW	ADG	MCE	MILK	MWW	STAY
EPD	16.5	-2.7	76.0	116.6	0.25	9.2	25.5	63.4	10.8
Rank	15	15	50	55	60	20	40	45	85

	DOC	CW	YG	MARB	BF	REA	API	TI
EPD	13.8	31.4	-0.19	0.64	-0.039	0.58	149.2	90.9
Rank	35	55	60	15	55	70	25	20

Est. Calf EPDs

	CE	BW	WW	YW	MCE	MILK	MWW	STAY	DOC	CW	YG	MARB	REA	\$API	\$TI
	14.6	-1.0	85.5	135.9	8.0	28.2	70.9	14.0	15.5	43.4	-0.11	0.69	0.63	159.1	95.6

Bred to ICD Billy Sunday (4105056). Confirmed safe and due 3/18.

DRAKE MISS YH21K Sells as Lot 94.

**LOT 95** **DRAKE MISS 65L**  
 Black II Polled 5/8 SM 3/8 AN  
 4/4/2023 65L ASA# 4453560  
 WS PROCLAMATION E202 TJ MAIN EVENT 503B  
**CCR SPEAK NOW 6178G** **TJ 108D**  
 CCR MS 2138 BOLDR 6028D TJ 40U

	CE	BW	WW	YW	ADG	MCE	MILK	MWW	STAY						
EPD	15.0	-0.7	81.2	129.6	0.30	8.7	28.1	68.7	12.4						
Rank	25	35	30	30	30	25	20	20	75						
	DOC	CW	YG	MARB	BF	REA	API	TI							
EPD	15.5	43.1	-0.29	0.23	-0.052	0.92	128.3	82.5							
Rank	20	25	30	75	30	15	60	45							
Est. Calf EPDs															
	CE	BW	WW	YW	MCE	MILK	MWW	STAY	DOC	CW	YG	MARB	REA	\$API	\$TI
	15.1	-0.5	93.7	149.1	7.7	28.7	75.5	12.7	17.1	46.5	-0.30	0.25	0.94	142.0	92.3

Bred to TJ Bonafide (3762668). Confirmed safe and due 4/10.  
 A top heifer with EPDs in the top 30%. Planned mating with Bonafied puts the calf in the top 15% of the nine numbers. 65L's dam, TJ108D, is one of our top cows.



DRAKE MISS 65L Sells as Lot 95.



**LOT 97** **IRON CREEK MS HANDYMAN 23K**  
 Homo Black II Homo Polled 5/8 SM 3/8 AN  
 10/5/2022 23K ASA# 4249572  
 RC XCEED 063D HOOK'S BEACON 56B  
**TJ HANDYMAN 436G** **IRON CREEK BEA'S BEACOND23AH**  
 TJ 409E TJ MISS 29B

	CE	BW	WW	YW	ADG	MCE	MILK	MWW	STAY						
EPD	13.8	0.1	74.1	116.6	0.27	8.4	32.1	69.1	12.7						
Rank	35	50	60	55	50	30	5	20	75						
	DOC	CW	YG	MARB	BF	REA	API	TI							
EPD	13.8	45.5	-0.09	0.86	-0.010	0.66	155.9	91.9							
Rank	35	20	85	4	90	55	20	15							
Est. Calf EPDs															
	CE	BW	WW	YW	MCE	MILK	MWW	STAY	DOC	CW	YG	MARB	REA	\$API	\$TI
	14.7	-1.0	79.5	125.7	9.3	31.7	71.4	16.7	15.8	45.9	-0.20	0.90	0.78	180.8	100.7

Bred to HA Knockout (4040478). Confirmed safe and due 2/6. Confirmed bull calf.  
 Another Handyman heifer out of a Beacon from the \$20,000 TJ Miss 29B cow. Excellent maternal traits of top 25% maternal calving ease, 3% milk and 15% maternal weaning weight, top 4% marbling and 20% API.



IRON CREEK MS HANDYMAN 23K Sells as Lot 97.



J904L Sells as Lot 99.

**LOT 99** **J904L**  
 Homo Black II Homo Polled 1/2 SM 5/16 CS 3/16 AN  
 2/26/2023 J904L ASA# 4341408

50J  
 CLRS GUARDIAN 317G HOOK'S EAGLE 6E  
 HOOK'S CRYSTAL 1C G904J  
 CAST CC 904G

CE	BW	WW	YW	ADG	MCE	MILK	MWW	STAY
11.3	0.8	96.5	148.3	0.32	4.9	20.3	68.5	16.2
Rank 70	65	3	10	20	85	80	20	35
DOC	CW	YG	MARB	BF	REA	API	TI	
12.5	54.1	-0.34	0.51	-0.052	1.23	149.3	95.5	
Rank 50	10	20	30	30	1	25	10	

Est. Calf EPDs

CE	BW	WW	YW	MCE	MILK	MWW	STAY	DOC	CW	YG	MARB	REA	\$API	\$TI
14.9	-0.3	92.0	142.2	8.5	26.6	72.5	14.1	14.2	44.7	-0.31	0.65	1.07	168.8	102.2

Bred to Five Star Jackson (3947790). Confirmed safe and due 2/28. Confirmed bull calf.  
 A great looking heifer with a royal pedigree here- out of 50J, our Guardian son from the mother of Hook's Eagle and out of an Eagle heifer from a \$7,000 female we purchased from Triangle J. This female is top 3% WW, 10% YW, 1% REA and a 150 API and 96 TI.



FIVE STAR JACKSON J10 Sire of Lot 101.

**LOT 98** **IRON CREEK MS HANDYMAN 37K**  
 Black II Homo Polled 1/4 SM 3/8 AN 3/8 CS  
 10/29/2022 37K ASA# 4249573

RC XCEED 063D WS ALL ABOARD B80  
**TJ HANDYMAN 436G** **IRON CREEK LOAD UP 37H**  
 TJ 409E TJ 584D

CE	BW	WW	YW	ADG	MCE	MILK	MWW	STAY
17.3	-2.0	84.0	128.4	0.28	10.2	27.0	68.9	11.4
Rank 10	20	25	30	40	10	25	20	85
DOC	CW	YG	MARB	BF	REA	API	TI	
12.1	38.4	-0.12	0.53	-0.025	0.56	147.3	92.2	
Rank 55	35	80	25	70	75	30	15	

Est. Calf EPDs

CE	BW	WW	YW	MCE	MILK	MWW	STAY	DOC	CW	YG	MARB	REA	\$API	\$TI
15.0	-0.6	89.5	141.8	8.5	28.9	73.6	14.3	14.7	46.9	-0.07	0.63	0.62	156.5	95.5

Bred to ICD Billy Sunday (4105056). Confirmed safe and due 3/23.  
 As with all Handyman daughters, 37K is moderate framed and easy keeping. She is in the top 10% for calving ease with solid growth, great maternal traits and a top 15% Terminal Index. Her mating to Billy Sunday (a Deadwood son from 50K's full sister) yields a calf in the top 10% for WW and YW, 15% for ADG, CW, Marb and API.

**LOT 100** **DRAKE MISS D364L**  
 Black II Polled 3/4 SM 1/4 AN  
 2/23/2023 D364L ASA# 4453562

HOOK'S EAGLE 6E ELM-MOUND/GS STANDSALONE  
**TJ BONAFIDE 647H** **DRAKE MISS Z364D**  
 TJ 23D DRAKE MISS X364Z

CE	BW	WW	YW	ADG	MCE	MILK	MWW	STAY
14.5	0.2	83.9	127.3	0.27	6.7	24.5	66.4	11.1
Rank 30	55	25	30	50	55	45	30	85
DOC	CW	YG	MARB	BF	REA	API	TI	
16.4	29.1	-0.36	0.08	-0.080	0.76	115.6	78.8	
Rank 10	65	15	95	10	40	80	60	

Est. Calf EPDs

CE	BW	WW	YW	MCE	MILK	MWW	STAY	DOC	CW	YG	MARB	REA	\$API	\$TI
16.5	-0.6	85.7	131.7	9.4	28.7	71.4	11.5	16.2	32.2	-0.32	0.43	0.84	151.9	93.8

Bred to Five Star Jackson (3947790). Confirmed safe and due 2/20. Confirmed heifer calf.

**LOT 101** **DRAKE MISS ZE11L**  
 Black II Polled PB SM  
 2/19/2023 ZE11L ASA# 4453561

HOOK'S FULL FIGURES 11F W/C EXECUTIVE ORDER 8543B  
**FIVE STAR JACKSON J10** **DRAKE MISS Z11E**  
 KBHR F316 DRAKE MISS JS11Z

CE	BW	WW	YW	ADG	MCE	MILK	MWW	STAY
16.6	-1.3	79.1	120.7	0.26	9.0	26.0	65.5	13.1
Rank 5	15	45	40	40	10	30	35	80
DOC	CW	YG	MARB	BF	REA	API	TI	
11.6	24.6	-0.32	0.44	-0.049	0.80	154.6	91.3	
Rank 55	65	80	15	95	70	20	15	

Est. Calf EPDs

CE	BW	WW	YW	MCE	MILK	MWW	STAY	DOC	CW	YG	MARB	REA	\$API	\$TI
14.7	-0.3	87.1	138.0	7.9	28.4	71.9	15.2	14.4	40.0	-0.17	0.59	0.74	159.9	95.2

Bred to ICD Billy Sunday (4105056). Confirmed safe and due 3/10. Confirmed heifer calf.

LOT **102** **DRAKE MISS H107L**

Black II Polled 5/8 SM 3/8 AN  
3/9/2023 H107L ASA# 4453556

TUEL COWMAKER A3032 TJ PLATTE RIVER 370D

**BSUM MOST WANTED 117J**

**DRAKE MISS F107H**

X/L MS 9103G

DRAKE MISS D107F

EPD	CE	BW	WW	YW	ADG	MCE	MILK	MWW	STAY
Rank	15.1	0.2	82.4	124.6	0.26	7.4	24.8	65.9	14.7
	25	55	30	35	55	45	45	35	50

EPD	DOC	CW	YG	MARB	BF	REA	API	TI
Rank	15.9	30.5	-0.14	0.42	-0.028	0.50	140.2	85.3
	15	60	75	45	70	85	40	35

Est. Calf EPDs	CE	BW	WW	YW	MCE	MILK	MWW	STAY	DOC	CW	YG	MARB	REA	\$API	\$TI
	16.8	-0.6	85.0	130.4	9.7	28.8	71.2	13.3	15.9	32.9	-0.21	0.60	0.71	161.1	95.8

Bred to Five Star Jackson (3947790). Confirmed safe and due 2/22. Confirmed bull calf.



DRAKE MISS H107L Sells as Lot 102.

LOT **103** **DRAKE MISS F04L**

Black II Polled 5/8 SM 3/8 AN  
3/10/2023 F04L ASA# 4453567

HOOK'S EAGLE 6E ELM-MOUND/GS STANDSALONE

**TJ BONAFIDE 647H**

**DRAKE MISS X04F**

TJ 23D

DRAKE MISS U04X

EPD	CE	BW	WW	YW	ADG	MCE	MILK	MWW	STAY
Rank	14.0	0.0	81.7	124.0	0.26	5.5	23.4	64.1	11.8
	35	50	30	40	55	75	55	40	80

EPD	DOC	CW	YG	MARB	BF	REA	API	TI
Rank	15.8	28.2	-0.30	0.14	-0.068	0.64	118.6	78.7
	15	65	30	90	20	60	75	60

Est. Calf EPDs	CE	BW	WW	YW	MCE	MILK	MWW	STAY	DOC	CW	YG	MARB	REA	\$API	\$TI
	16.2	-0.7	84.6	130.1	8.8	28.1	70.3	11.9	15.9	31.7	-0.29	0.46	0.78	153.1	93.6

Bred to Five Star Jackson (3947790). Confirmed safe and due 2/25. Confirmed heifer calf.



TJ BONAFIDE 647H Sire of Lot 103.

The bred heifers were bred by AI and then pasture exposed to the bulls as indicated in the footnotes. The heifers were then checked by ultrasound. The breeding information is the best estimate of the technician but is not a guarantee. We cannot guarantee calf sex or exact calving date and ask you to use your best judgement in this regard. Buyers agree to pick up all bred heifers within 7 days of the sale. The bulls used on the heifer AI and naturals are all top bulls of the breed. Five Star Jackson, HK Knockout, TJ Bonafide and ICD Billy Sunday.

We are proud to offer you this outstanding set of females. They're definitely donor quality, front pasture kind, and brood cows deluxe represented in this offering.

Each of the bulls below is owned, in whole or in part, by Iron Creek Cattle Co. or Drake Simmental.  
Contact Larry, Mason or Flint for semen.



**FIVE STAR JACKSON**

FOR REFERENCE	<b>FIVE STAR JACKSON</b>								
	Hetero Black II Homo Polled						PB SM		
	2/16/2021		J10		ASA# 3947790				
TJ DIPLOMAT 294D				WS ALL ABOARD B80					
<b>HOOK'S FULL FIGURES 11F</b>				<b>KBHR F316</b>					
HOOK'S DOCILA 23D				KBHR C295					
	CE	BW	WW	YW	ADG	MCE	MILK	MWW	STAY
EPD	18.4	-1.4	87.5	136.1	0.30	12.0	32.8	76.4	11.9
Rank	2	10	20	15	20	1	2	4	90
	DOC	CW	YG	MARB	BF	REA	API	TI	
EPD	15.9	35.2	-0.27	0.78	-0.035	0.91	177.0	105.8	
Rank	10	25	95	1	99	45	3	1	



**TJ BONAFIDE**

FOR REFERENCE	<b>TJ BONAFIDE</b>								
	Homo Black II Homo Polled						5/8 SM 3/8 AN		
	1/23/2020		647H		ASA# 3762668				
HOOK'S BLACK HAWK 50B				TJ MAKERS MARK 215Y					
<b>HOOK'S EAGLE 6E</b>				<b>TJ 23D</b>					
HOOK'S CRYSTAL 1C				TJ 8T					
	CE	BW	WW	YW	ADG	MCE	MILK	MWW	STAY
EPD	15.1	-0.3	106.1	168.5	0.39	6.7	29.2	82.2	13.0
Rank	25	45	1	1	2	55	15	1	70
	DOC	CW	YG	MARB	BF	REA	API	TI	
EPD	18.6	49.8	-0.30	0.27	-0.064	0.96	141.7	98.4	
Rank	3	15	30	70	20	15	40	4	



**HOOK'S EAGLE**

FOR REFERENCE	<b>HOOK'S EAGLE</b>								
	Homo Black II Homo Polled						3/4 SM 1/4 AN		
	1/22/2017		6E		ASA# 3253742				
HOOK'S XAVIER 14X				GW-WBF SUBSTANCE 820Y					
<b>HOOK'S BLACK HAWK 50B</b>				<b>HOOK'S CRYSTAL 1C</b>					
HOOK'S YVETTE 100Y				HOOK'S UNDERESTIMATED 6U					
	CE	BW	WW	YW	ADG	MCE	MILK	MWW	STAY
EPD	14.6	-2.3	98.0	152.7	0.34	4.6	19.5	68.4	14.6
Rank	30	15	3	4	10	85	85	25	55
	DOC	CW	YG	MARB	BF	REA	API	TI	
EPD	19.0	43.3	-0.42	0.52	-0.047	1.38	157.8	101.2	
Rank	3	25	5	30	45	1	15	2	

Each of the bulls below is owned, in whole or in part, by Iron Creek Cattle Co. or Drake Simmental.  
Contact Larry, Mason or Flint for semen.

FOR REFERENCE	<b>BSUM MOST WANTED</b>			
	Hetero Black II Homo Polled		5/8 SM 3/8 AN	
	2/15/2021	117J	ASA# 3916336	

SCHIEFELBEIN EFFECTIVE 61                      NLC COW BOSS 160C  
**TUEL COWMAKER A3032**                      **X/L MS 9103G**  
 RRS MISS LEGACY 615X                      GW MISS DUE NORTH 800D

	CE	BW	WW	YW	ADG	MCE	MILK	MWW	STAY
EPD	17.9	-0.2	91.0	143.4	0.33	8.9	26.5	72.1	15.9
Rank	10	45	10	10	15	20	30	10	40
	DOC	CW	YG	MARB	BF	REA	API	TI	
EPD	15.7	34.4	-0.17	0.44	-0.036	0.57	152.6	92.5	
Rank	15	45	70	40	55	70	20	15	



BSUM MOST WANTED

FOR REFERENCE	<b>KBHR BACKROADS</b>			
	Homo Black II Homo Polled		PB SM	
	3/16/2019	G014	ASA# 3618633	

HOOK'S BEACON 56B                      CCR COWBOY CUT 5048Z  
**KBHR HIGH ROAD E283**                      **KBHR B120**  
 WS MISS SUGAR C4                      KBHR W001

	CE	BW	WW	YW	ADG	MCE	MILK	MWW	STAY
EPD	15.4	0.4	77.6	115.0	0.23	8.8	21.0	59.8	22.5
Rank	10	35	55	55	65	15	70	60	2
	DOC	CW	YG	MARB	BF	REA	API	TI	
EPD	18.3	27.9	-0.22	0.48	-0.044	0.59	169.2	88.1	
Rank	2	50	99	10	95	95	10	25	



KBHR BACKROADS

FOR REFERENCE	<b>POSS DEADWOOD</b>			
	Homo Black II Homo Polled		PB AN	
	9/5/2019	9731	ASA# 3871754	

BASIN PAYWEIGHT 1682                      POSS EASY IMPACT 0119  
**POSS MAVERICK**                      **POSS ELLUNAMERE 399**  
 POSS PRIDE 5163                      POSS ELLUNAMERE 0170

	CE	BW	WW	YW	ADG	MCE	MILK	MWW	STAY
EPD	13.2	-0.2	102.4	176.9	0.47	8.5	26.9	78.0	12.6
Rank	45	45	1	1	1	25	30	3	75
	DOC	CW	YG	MARB	BF	REA	API	TI	
EPD	14.4	90.5	0.17	1.65	0.028	0.72	193.6	117.0	
Rank	25	1	99	1	99	45	1	1	



POSS DEADWOOD

Each of the bulls below is owned, in whole or in part, by Iron Creek Cattle Co. or Drake Simmental.  
Contact Larry, Mason or Flint for semen.



**TJ WAR PAINT**

FOR REFERENCE	<b>TJ WAR PAINT</b>							
	Homo Black    Homo Polled						1/2 SM 1/2 AN	
	2/24/2021			759J			ASA# 3910125	

TJ FROSTY 318E					CCR COWBOY CUT 5048Z				
<b>TJ CHIEF 460G</b>					<b>TJ 2D</b>				
TJ 52A					TJ MISS NEW DAY U14				
	CE	BW	WW	YW	ADG	MCE	MILK	MWW	STAY
EPD	7.8	1.2	89.9	130.7	0.25	4.1	39.2	84.2	19.4
Rank	95	75	10	25	60	90	1	1	10
	DOC	CW	YG	MARB	BF	REA	API	TI	
EPD	12.4	42.7	0.05	0.56	0.013	0.40	146.7	91.1	
Rank	50	25	99	25	99	95	30	20	



**I.C.D. BILLY SUNDAY**

FOR REFERENCE	<b>I.C.D. BILLY SUNDAY</b>							
	Homo Black    Homo Polled						1/2 SM 1/2 AN	
	3/17/2022			F234K			ASA# 4105056	

POSS MAVERICK					TJ TEARDROP 783F				
<b>POSS DEADWOOD</b>					<b>TJ 20H</b>				
POSS ELLUNAMERE 399					TJ 92C				
	CE	BW	WW	YW	ADG	MCE	MILK	MWW	STAY
EPD	12.6	0.8	94.5	154.5	0.38	6.7	30.6	77.9	17.1
Rank	50	65	5	3	3	55	10	3	25
	DOC	CW	YG	MARB	BF	REA	API	TI	
EPD	17.3	54.9	-0.02	0.73	0.000	0.65	164.4	100.2	
Rank	10	10	95	10	95	60	10	3	

This son of Poss Deadwood out of our full sister to the stud bull 50K has a killer look while maintaining EPDs in the top 5% for weaning weight, top 3% for yearling weight and average daily gain, top 10% marbling, 10% milk and 3% maternal weaning weight with a top 10% API and top 3% TI.



**CCR SPEAK NOW**

FOR REFERENCE	<b>CCR SPEAK NOW</b>							
	Homo Black    Homo Polled						3/4 SM 1/4 AN	
	8/30/2019			6178G			ASA# 3703453	

CCR COWBOY CUT 5048Z					CCR BOULDER 1339A				
<b>WS PROCLAMATION E202</b>					<b>CCR MS 2138 BOLDR 6028D</b>				
WS MISS SUGAR C4					CCR MS 7332REVENUE 2138Z				
	CE	BW	WW	YW	ADG	MCE	MILK	MWW	STAY
EPD	16.4	-0.6	85.6	138.8	0.33	10.1	25.6	68.3	14.0
Rank	15	40	20	15	15	10	40	25	60
	DOC	CW	YG	MARB	BF	REA	API	TI	
EPD	16.8	41.8	-0.25	0.28	-0.044	0.86	137.8	86.1	
Rank	10	25	45	65	45	25	45	35	



Each of the bulls below is owned, in whole or in part, by Iron Creek Cattle Co. or Drake Simmental.  
Contact Larry, Mason or Flint for semen.

FOR REFERENCE	<b>HA KNOCKOUT</b>							
	Homo Black II Homo Polled						PB SM	
	1/28/2022		2K		ASA# 4040478			

BRIDLE BIT ECLIPSE E744                      HOOK'S BLACK HAWK 50B

**HOOK'S GALILEO 210G**                      **HA HOPE 004H**  
HOOK'S EVITA 18E                      HA FELICITY 815F

	CE	BW	WW	YW	ADG	MCE	MILK	MWW	STAY
EPD	15.5	-2.0	84.9	134.7	0.31	10.1	31.2	73.6	20.6
Rank	10	10	25	20	15	4	5	10	5
	DOC	CW	YG	MARB	BF	REA	API	TI	
EPD	17.7	46.3	-0.31	0.94	-0.070	0.90	199.9	108.8	
Rank	3	10	85	1	70	45	1	1	



HA KNOCKOUT

FOR REFERENCE	<b>HOOK'S CRYSTALIC</b>							
	Homo Black II Homo Polled						3/4 SM 1/4 AN	
	1/28/2015		1C		ASA# 3013438			

GW PREMIUM BEEF 021TS                      TRIPLE C INVASION R47K

**GW-WBF SUBSTANCE 820Y**                      **HOOK'S UNDERESTIMATED 6U**  
GW MISS MATERNAL 558P                      HOOKS PROMENADE 14-P

	CE	BW	WW	YW	ADG	MCE	MILK	MWW	STAY
EPD	10.4	2.0	86.9	139.1	0.33	5.6	20.6	63.9	18.9
Rank	80	85	15	15	15	75	80	40	10
	DOC	CW	YG	MARB	BF	REA	API	TI	
EPD	17.0	40.3	-0.37	0.64	-0.077	0.96	155.8	91.9	
Rank	10	30	15	15	10	15	20	15	



HOOK'S CRYSTALIC

FOR REFERENCE	<b>KBHR MATRON OF HONOR</b>							
	Homo Black II Homo Polled						PB SM	
	3/26/2018		F202		ASA# 3499782			

HOOKS SHEAR FORCE 38K                      WS HOT BEEF X38

**HOOK'S BEACON 56B**                      **BAR CK MS X38 106Z**  
HOOKS ZAFIRAH 41Z                      BAR CK MS MEAT MKR 323T

	CE	BW	WW	YW	ADG	MCE	MILK	MWW	STAY
EPD	14.6	-0.2	83.2	131.1	0.30	10.3	30.7	72.2	19.8
Rank	15	25	30	25	20	3	10	15	10
	DOC	CW	YG	MARB	BF	REA	API	TI	
EPD	12.9	55.2	-0.37	0.77	-0.053	1.32	184.1	101.4	
Rank	35	2	60	1	85	2	2	3	



KBHR MATRON OF HONOR



**LCDR JETTA**

FOR REFERENCE	<b>LCDR JETTA</b>								
	Hetero Black // Homo Polled							PB SM	
	3/23/2021			93J		ASA# 3960758			
W/C BANKROLL 811D				CLRS GRADE-A 875 A					
<b>W/C FORT KNOX 609F</b>				<b>WS MISS SUGAR C4</b>					
K-LER DOLLY'S QUEEN 609D				WS ANISE A71					
EPD	CE	BW	WW	YW	ADG	MCE	MILK	MWW	STAY
Rank	13.1	0.7	86.4	139.0	0.33	6.2	31.1	74.3	13.3
	30	40	25	15	10	45	5	10	75
EPD	DOC	CW	YG	MARB	BF	REA	API	TI	
Rank	16.1	35.8	-0.33	0.45	-0.063	0.87	151.7	94.1	
	10	25	80	15	70	50	20	10	



**IRON CREEK SMOKE SHOW 131K**

FOR REFERENCE	<b>IRON CREEK SMOKE SHOW 131K</b>								
	Homo Black // Homo Polled							1/2 SM 1/2 AN	
	09/21/202			131K		ASA# 4124925			
POSS MAVERICK				HOOK'S BEACON 56B					
<b>POSS DEADWOOD</b>				<b>KBHR MATRON OF HONOR F202</b>					
POSS ELLUNAMERE 399				BAR CK MS X38 106Z					
EPD	CE	BW	WW	YW	ADG	MCE	MILK	MWW	STAY
Rank	15.9	-1.1	86.6	152.2	0.41	11.0	28.5	71.8	15.4
	20	30	20	4	1	5	20	15	45
EPD	DOC	CW	YG	MARB	BF	REA	API	TI	
Rank	13.6	73.9	-0.01	1.30	0.004	0.89	198.5	112.6	
	35	1	95	1	95	20	1	1	

This full sister to the \$30,000 Iron Creek Overhaul displays an outstanding phenotype with elite genetics-top 15% calving ease, 1% average daily gain, carcass weight, marbling, All Purpose Index (199!) and Terminal Index (113!). Embryo calves arriving January 2025.



**IRON CREEK MOXIE D68K**

FOR REFERENCE	<b>IRON CREEK MOXIE D68K</b>								
	Homo Black // Homo Polled							PB SM	
	03/04/2022			D86K		ASA# 4115093			
HOOK'S BEACON 56B				TJ TEARDROP 783F					
<b>CLRS GUARDIAN 317G</b>				<b>TJ 20H</b>					
CLRS ALWAYS XCELLENT				TJ 92C					
EPD	CE	BW	WW	YW	ADG	MCE	MILK	MWW	STAY
Rank	15.5	-2.2	87.4	133.9	0.29	7.5	25.9	69.5	25.3
	10	5	20	20	25	25	20	20	1
EPD	DOC	CW	YG	MARB	BF	REA	API	TI	
Rank	9.1	31.6	-0.26	0.53	-0.024	0.91	187.0	99.2	
	80	35	95	10	99	45	1	4	

This Guardian daughter out of our fill sister to the 50K bull has impressed from her first day with her mass combined with a feminine front end -and her EPD profile iS elite balance-top 10% calving ease, top 29% growth, 15-25% maternal traits, 10% marbling with a top 1% API of 188 and top 4% TI of 100. Embryo calves arriving beginning January 2025.

FOR REFERENCE	<b>FIVE STAR JAZZY J14</b>		
	Red II Homo Polled	PB SM	
	2/22/2021	J14	ASA# 3947793

TJ DIPLOMAT 294D  
**HOOK'S FULL FIGURE 11F**  
 HOOK'S DOCILA 23D

WS ALL ABOARD B80  
**KBHR F316**  
 KBHR C295

	CE	BW	WW	YW	ADG	MCE	MILK	MWW	STAY
EPD	14.8	-0.1	91.1	146.6	0.35	10.0	32.7	78.1	10.2
Rank	15	25	15	10	4	4	3	3	99
	DOC	CW	YG	MARB	BF	REA	API	TI	
EPD	16.6	40.3	-0.32	0.64	-0.044	1.04	161.3	102.9	
Rank	10	15	80	4	95	20	15	2	

This outstanding red donor is a full sister to Five Star Jackson and carries his broad base of genetic excellence with calving ease in the top 15%, weaning weight in the top 15%, yearling weight in the top 10% and average daily gain top 4%, outstanding maternal traits of top 4% maternal calving ease, 3% milk and maternal weaning weight, top 4% marbling and 20% ribeye area. Combining these numbers with her ideal phenotype yields an exciting donor. Her first calves this year have only raised our excitement and expectations.



FIVE STAR JAZZY J14

FOR REFERENCE	<b>MONTANA BLACKBIRD 7250</b>		
	Homo Black II Homo Polled	PB Angus	
	09-03-2017	7250	AAA# +*18885912

BASIN PAYWEIGHT 006S  
**BASIN PAYWEIGHT 168Z**  
 21AR O LASS 7017

SITZ UPWARD 307R  
**GALAXY BLACKBIRD 210Z**  
 RIVERBEND BLACKBIRD 4301

	CED	BW	WW	YW	CEM	MILK	DOC	
EPD	+14	-2.7	+66	+121	+13	+36	+32	
Rank	3	2	30	20	10	5	2	
	CW	MARB	RE	FAT	SM	\$W	\$B	\$C
EPD	+52	+.82	+.57	+.070	+72	+79	+154	+272
Rank	25	20	45	95	20	3	25	15



MONTANA BLACKBIRD 7250

FOR REFERENCE	<b>RB LADY BLASTER 412-7532</b>		
	Homo Black II Homo Polled	PB Angus	
	09-15-2017	7532	AAA# +*19094973

MOGCK BULLSEYE  
**BRUNS BLASTER**  
 BALDRIDGE BLACKBIRD 11 BAF

EXAR COMANCHERO 1022B  
**RB LADY COMANCHERO 079-412**  
 R B LADY STANDARD 305-0790

	CED	BW	WW	YW	CEM	MILK	DOC	
EPD	+4	+2.5	+87	+148	+15	+41	+28	
Rank	65	75	2	2	3	1	10	
	CW	MARB	RE	FAT	SM	\$W	\$B	\$C
EPD	+70	+.78	+.93	+.005	+68	+89	+172	+291
Rank	4	25	10	40	30	1	10	10



RB LADY BLASTER 412-7532

Drake Simmental  
24366 570th St  
Centerville, IA 52544

Presorted  
First Class  
US Postage  
**PAID**  
SlateGroup



# **DRAKE SIMMENTAL**

## *Bull and Female Sale*

# **1.31.25**

Drake Sale Facility, Centerville, IA at 1:00 PM (CT)